

ATTACHMENT B

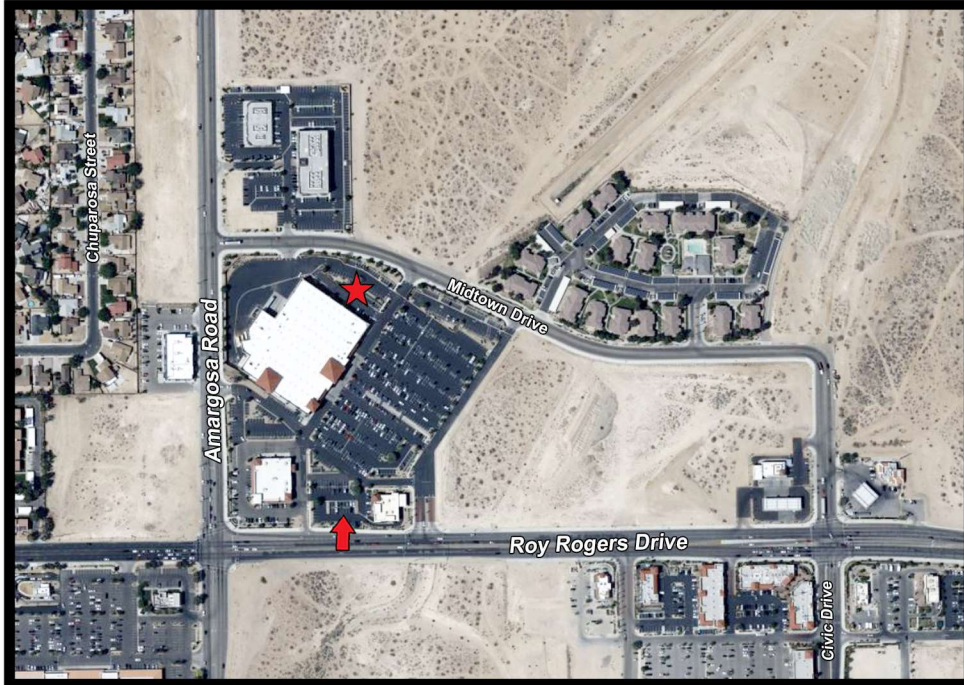
Photo Simulations



CSL05099
WINCO FOOD DESERT SUN PLAZA
15350 ROY ROGERS DRIVE
VICTORVILLE, CA 92394

Prepared By:
RLS
RELIANT LAND SERVICES
550 N Parkcenter Dr, Ste 200
Santa Ana, California 92705
(714) 685-0123

AERIAL MAP



PROPOSED

VIEW FROM SOUTH OF (N) MONOPALM

EXISTING



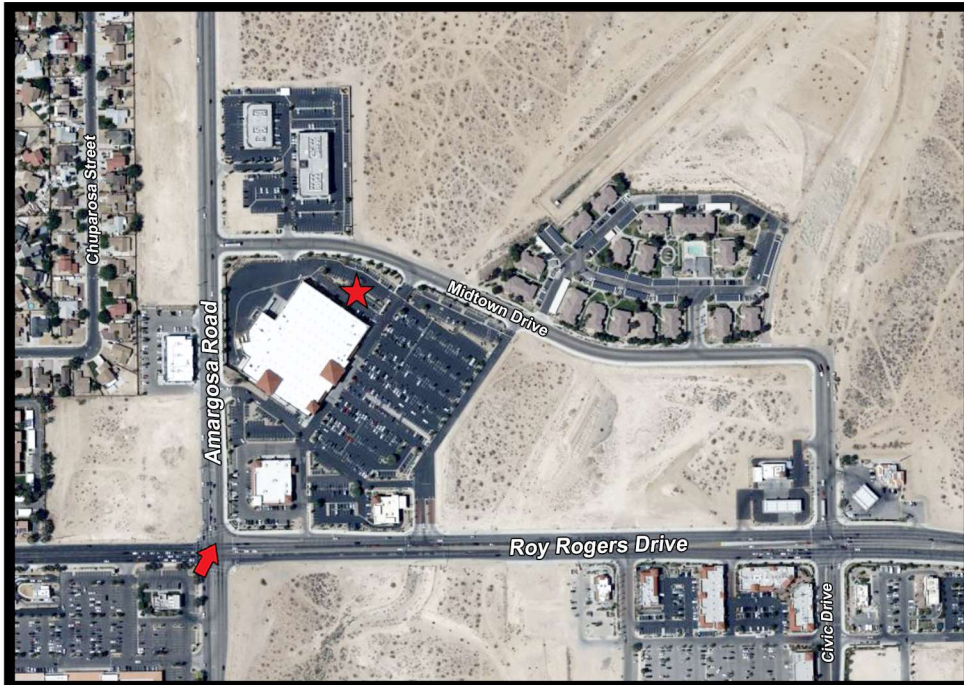
Accuracy of photo simulation based upon information provided by project applicant. The proposed installation is an artistic representation, and not intended to be an exact reproduction. The final installation will have cables, cable ports, and various attachments, such as antennas, nuts, and bolts. Every effort will be made to disguise these components and they will not be readily apparent to the casual observer or passerby. However, upon close scrutiny, the true nature of the installation will be apparent.



CSL05099
WINCO FOOD DESERT SUN PLAZA
15350 ROY ROGERS DRIVE
VICTORVILLE, CA 92394

Prepared By:
RLS
RELIANT LAND SERVICES
550 N Parkcenter Dr, Ste 200
Santa Ana, California 92705
(714) 685-0123

AERIAL MAP



EXISTING



PROPOSED



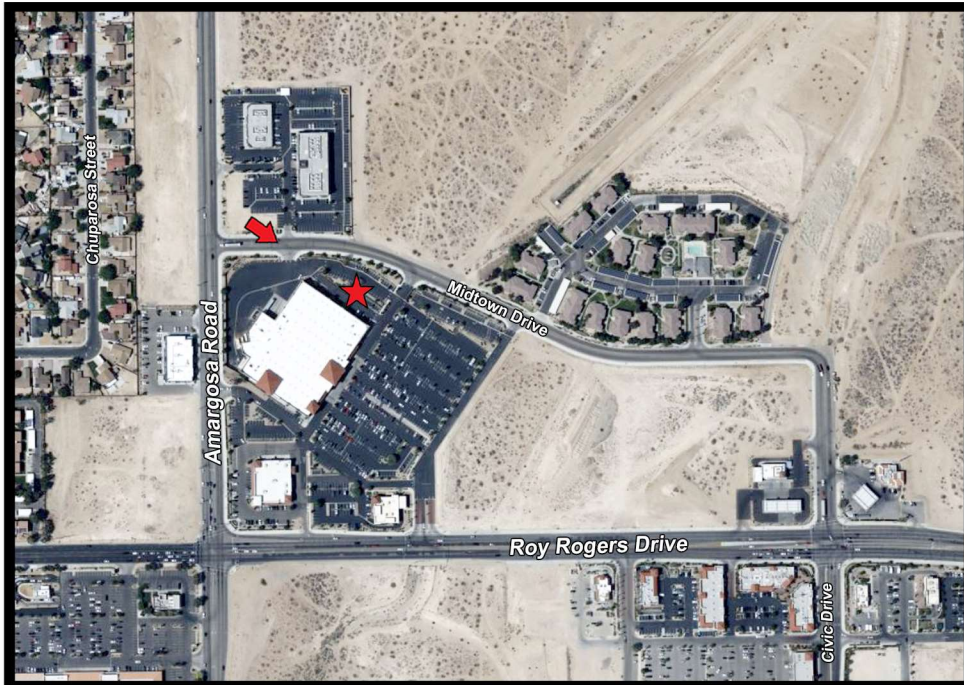
Accuracy of photo simulation based upon information provided by project applicant. The proposed installation is an artistic representation, and not intended to be an exact reproduction. The final installation will have cables, cable ports, and various attachments, such as antennas, nuts, and bolts. Every effort will be made to disguise these components and they will not be readily apparent to the casual observer or passerby. However, upon close scrutiny, the true nature of the installation will be apparent.



CSL05099
WINCO FOOD DESERT SUN PLAZA
15350 ROY ROGERS DRIVE
VICTORVILLE, CA 92394

Prepared By:
RLS
RELIANT LAND SERVICES
550 N Parkcenter Dr, Ste 200
Santa Ana, California 92705
(714) 685-0123

AERIAL MAP



EXISTING



PROPOSED



VIEW FROM NORTHWEST OF (N) MONOPALM

Accuracy of photo simulation based upon information provided by project applicant. The proposed installation is an artistic representation, and not intended to be an exact reproduction. The final installation will have cables, cable ports, and various attachments, such as antennas, nuts, and bolts. Every effort will be made to disguise these components and they will not be readily apparent to the casual observer or passerby. However, upon close scrutiny, the true nature of the installation will be apparent.



CSL05099
WINCO FOOD DESERT SUN PLAZA
15350 ROY ROGERS DRIVE
VICTORVILLE, CA 92394

Prepared By:
RLS
RELIANT LAND SERVICES
550 N Parkcenter Dr, Ste 200
Santa Ana, California 92705
(714) 685-0123

AERIAL MAP



EXISTING



PROPOSED



Accuracy of photo simulation based upon information provided by project applicant. The proposed installation is an artistic representation, and not intended to be an exact reproduction. The final installation will have cables, cable ports, and various attachments, such as antennas, nuts, and bolts. Every effort will be made to disguise these components and they will not be readily apparent to the casual observer or passerby. However, upon close scrutiny, the true nature of the installation will be apparent.