

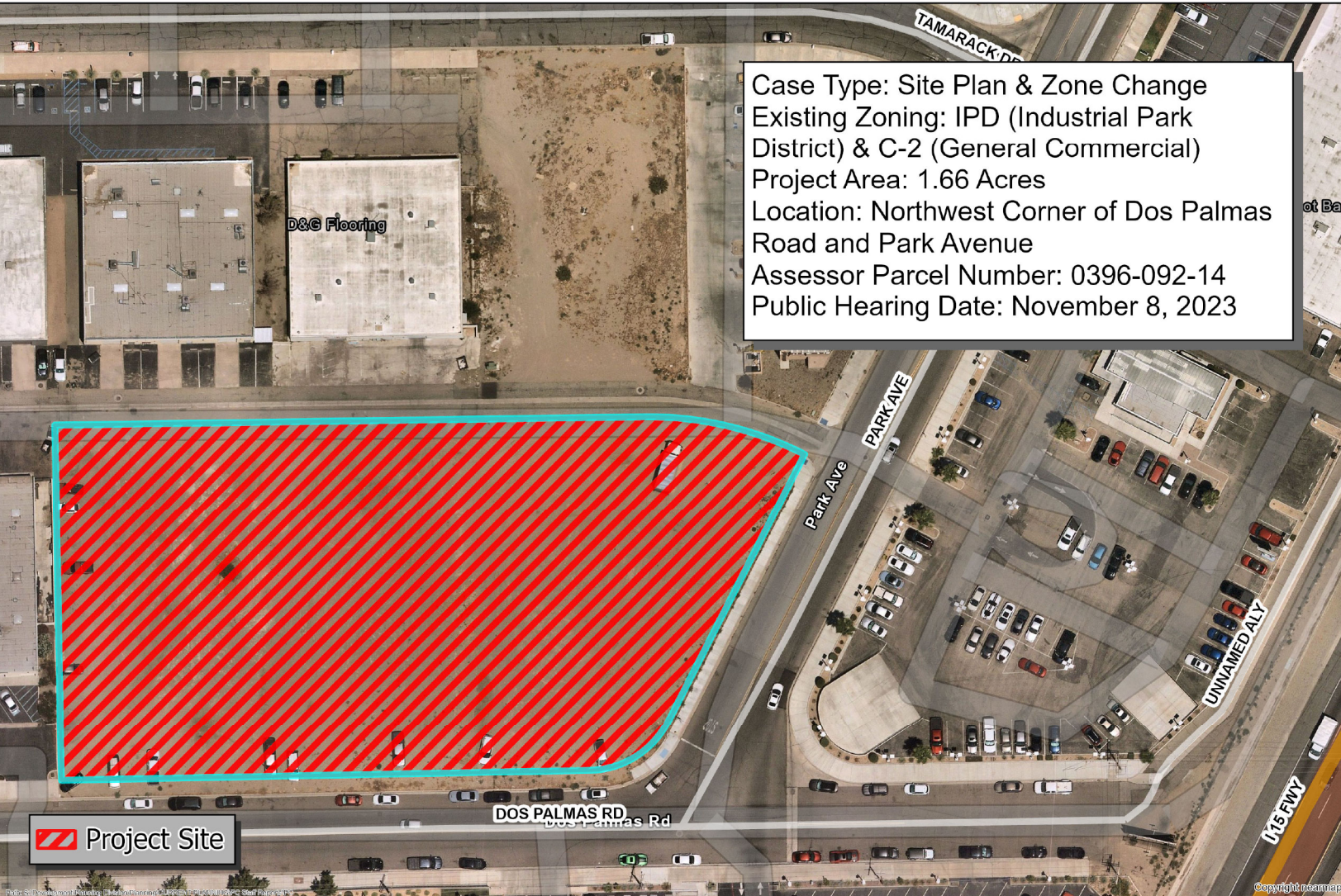
# PLANNING COMMISSION

## ATTACHMENT F

Aerial Image

## PLAN22-00027

Case Type: Site Plan & Zone Change  
Existing Zoning: IPD (Industrial Park District) & C-2 (General Commercial)  
Project Area: 1.66 Acres  
Location: Northwest Corner of Dos Palmas Road and Park Avenue  
Assessor Parcel Number: 0396-092-14  
Public Hearing Date: November 8, 2023



 Project Site

Case: PLAN22-00027  
Printed: October 10, 2023  
Author: Daisy Kawasaki - Associate Planner

Disclaimer: This map is to be used for visual reference only.  
Sources are available upon request.

0 40 80 160 Feet

