

Attachment A



Midmark Quotation

Customer Pricing

Quote Valid for 90 Days
Date Quoted: 8/13/2024

Project Information:

Project Name: City of Victorville

Project #: A241464 **Phase:** 02 **Rev:** 3

Agreement: Animal Health 2024 Pricing

Quote Breakdown (Reference Number: A241464 Phase: 02 Rev: 3)

Ext. Customer

Total Product Charges

\$262,852.10



Midmark Quotation
Customer Pricing

Quote Valid for 90 Days
Date Quoted: 8/13/2024

Project Information:
Project Name: City of Victorville
Project #: A241464 Phase: 02 Rev: 3
Agreement: Animal Health 2024 Pricing

Room Breakdown	Customer Each	Ext. Customer
Additional 4x4 Kennels	\$8,214.86	\$8,214.86
Additional 4x5 Kennels	\$9,057.96	\$9,057.96
Cafeteria	\$70,205.04	\$70,205.04
Classroom 4	\$35,928.54	\$35,928.54
Classroom 5	\$69,722.85	\$69,722.85
Classroom 6	\$69,722.85	\$69,722.85
Total Price:		Customer: \$262,852.10



Midmark Quotation

Customer Pricing

Quote Valid for 90 Days
Date Quoted: 8/13/2024

Project Information:

Project Name: City of Victorville

Project #: A241464 **Phase:** 02 **Rev:** 3

Agreement: Animal Health 2024 Pricing

Category Breakdown

Kennel Runs

Ext. Customer

\$262,852.10

Total Price:

Customer: \$262,852.10



Midmark Quotation

Quote Valid for 90 Days

Date Quoted: 8/13/2024

Project Information:

Project Name: City of Victorville

Project #: A241464 **Phase:** 02 **Rev:** 3

Agreement: Animal Health 2024 Pricing

Part Number	QTY	Description
Additional 4x4 Kennels		
10010768-316	2	4' x 4' Ultrabase, Fiberglass, Aurora
BU48-NFF0000-XXX	2	Sani-Kennel Ultrabase Back Panel, 48in. wide, No Kennel Door, FRP Upper Infill, FRP Lower Infill, TBD FRP Color
RU48-SW00000-878	2	Sani-Kennel Ultrabase Rest Bench, 48in. wide, Swing Up, Beige
SF48-LRYBSNP-XXX	2	Stainless Stall Front, 48in. wide, Left Hinge, Fixed Portion Right, With Threshold, Glass Gate Infill Material, Same as Gate Stall Front, No Bowl Bracket, Panel Mounted
SU48-FLUWF00-XXX	2	Sani-Kennel Ultrabase Side Panel, 48in., Freestanding, Left End Panel, U-Channel, Wire Upper Infill Material, FRP Lower Infill Material, TBD FRP Color
SU48-FRUWF00-XXX	2	Sani-Kennel Ultrabase Side Panel, 48in., Freestanding, Right End Panel, U-Channel, Wire Upper Infill Material, FRP Lower Infill Material, TBD FRP Color
Additional 4x5 Kennels		
10010769-316	2	4' x 5' Ultrabase, Fiberglass, Aurora
BU48-NFF0000-XXX	2	Sani-Kennel Ultrabase Back Panel, 48in. wide, No Kennel Door, FRP Upper Infill, FRP Lower Infill, TBD FRP Color
RU48-SW00000-878	2	Sani-Kennel Ultrabase Rest Bench, 48in. wide, Swing Up, Beige
SF48-LRYBSNP-XXX	2	Stainless Stall Front, 48in. wide, Left Hinge, Fixed Portion Right, With Threshold, Glass Gate Infill Material, Same as Gate Stall Front, No Bowl Bracket, Panel Mounted
SU60-FLUWF00-XXX	2	Sani-Kennel Ultrabase Side Panel, 60in., Freestanding, Left End Panel, U-Channel, Wire Upper Infill Material, FRP Lower Infill Material, TBD FRP Color
SU60-FRUWF00-XXX	2	Sani-Kennel Ultrabase Side Panel, 60in., Freestanding, Right End Panel, U-Channel, Wire Upper Infill Material, FRP Lower Infill Material, TBD FRP Color
Cafeteria		
10010769-316	18	4' x 5' Ultrabase, Fiberglass, Aurora
BU48-NFF0000-XXX	18	Sani-Kennel Ultrabase Back Panel, 48in. wide, No Kennel Door, FRP Upper Infill, FRP Lower Infill, TBD FRP Color
RU48-SW00000-878	18	Sani-Kennel Ultrabase Rest Bench, 48in. wide, Swing Up, Beige
SF48-LRYBSNP-XXX	6	Stainless Stall Front, 48in. wide, Left Hinge, Fixed Portion Right, With Threshold, Glass Gate Infill Material, Same as Gate Stall Front, No Bowl Bracket, Panel Mounted
SF48-LRYBSNP-XXX	12	Stainless Stall Front, 48in. wide, Right Hinge, Fixed Portion Left, With Threshold, Glass Gate Infill Material, Same as Gate Stall Front, No Bowl Bracket, Panel Mounted
SU60-FDUWF00-XXX	15	Sani-Kennel Ultrabase Side Panel, 60in., Freestanding, Division Panel, U-Channel, Wire Upper Infill Material, FRP Lower Infill Material, TBD FRP Color
SU60-FLUWF00-XXX	3	Sani-Kennel Ultrabase Side Panel, 60in., Freestanding, Left End Panel, U-Channel, Wire Upper Infill Material, FRP Lower Infill Material, TBD FRP Color
SU60-FRUWF00-XXX	3	Sani-Kennel Ultrabase Side Panel, 60in., Freestanding, Right End Panel, U-Channel, Wire Upper Infill Material, FRP Lower Infill Material, TBD FRP Color

Classroom 4



Midmark Quotation

Quote Valid for 90 Days

Date Quoted: 8/13/2024

Project Information:

Project Name: City of Victorville

Project #: A241464 **Phase:** 02 **Rev:** 3

Agreement: Animal Health 2024 Pricing

Part Number	QTY	Description
10010768-316	10	4' x 4' Ultrabase, Fiberglass, Aurora
BU48-NFF0000-XXX	10	Sani-Kennel Ultrabase Back Panel, 48in. wide, No Kennel Door, FRP Upper Infill, FRP Lower Infill, TBD FRP Color
RU48-SW00000-878	10	Sani-Kennel Ultrabase Rest Bench, 48in. wide, Swing Up, Beige
SF48-LRYBSNP-XXX	5	Stainless Stall Front, 48in. wide, Left Hinge, Fixed Portion Right, With Threshold, Glass Gate Infill Material, Same as Gate Stall Front, No Bowl Bracket, Panel Mounted
SF48-RLYBSNP-XXX	5	Stainless Stall Front, 48in. wide, Right Hinge, Fixed Portion Left, With Threshold, Glass Gate Infill Material, Same as Gate Stall Front, No Bowl Bracket, Panel Mounted
SU48-FDUWF00-XXX	8	Sani-Kennel Ultrabase Side Panel, 48in., Freestanding, Division Panel, U-Channel, Wire Upper Infill Material, FRP Lower Infill Material, TBD FRP Color
SU48-FLUWF00-XXX	2	Sani-Kennel Ultrabase Side Panel, 48in., Freestanding, Left End Panel, U-Channel, Wire Upper Infill Material, FRP Lower Infill Material, TBD FRP Color
SU48-FRUWF00-XXX	2	Sani-Kennel Ultrabase Side Panel, 48in., Freestanding, Right End Panel, U-Channel, Wire Upper Infill Material, FRP Lower Infill Material, TBD FRP Color

Classroom 5

10010768-316	13	4' x 4' Ultrabase, Fiberglass, Aurora
10010769-316	6	4' x 5' Ultrabase, Fiberglass, Aurora
BU48-NFF0000-XXX	19	Sani-Kennel Ultrabase Back Panel, 48in. wide, No Kennel Door, FRP Upper Infill, FRP Lower Infill, TBD FRP Color
RU48-SW00000-878	19	Sani-Kennel Ultrabase Rest Bench, 48in. wide, Swing Up, Beige
SF48-LRYBSNP-XXX	12	Stainless Stall Front, 48in. wide, Left Hinge, Fixed Portion Right, With Threshold, Glass Gate Infill Material, Same as Gate Stall Front, No Bowl Bracket, Panel Mounted
SF48-RLYBSNP-XXX	7	Stainless Stall Front, 48in. wide, Right Hinge, Fixed Portion Left, With Threshold, Glass Gate Infill Material, Same as Gate Stall Front, No Bowl Bracket, Panel Mounted
SU48-FDUWF00-XXX	11	Sani-Kennel Ultrabase Side Panel, 48in., Freestanding, Division Panel, U-Channel, Wire Upper Infill Material, FRP Lower Infill Material, TBD FRP Color
SU48-FLUWF00-XXX	2	Sani-Kennel Ultrabase Side Panel, 48in., Freestanding, Left End Panel, U-Channel, Wire Upper Infill Material, FRP Lower Infill Material, TBD FRP Color
SU48-FRUWF00-XXX	2	Sani-Kennel Ultrabase Side Panel, 48in., Freestanding, Right End Panel, U-Channel, Wire Upper Infill Material, FRP Lower Infill Material, TBD FRP Color
SU60-FDUWF00-XXX	5	Sani-Kennel Ultrabase Side Panel, 60in., Freestanding, Division Panel, U-Channel, Wire Upper Infill Material, FRP Lower Infill Material, TBD FRP Color
SU60-FLUWF00-XXX	1	Sani-Kennel Ultrabase Side Panel, 60in., Freestanding, Left End Panel, U-Channel, Wire Upper Infill Material, FRP Lower Infill Material, TBD FRP Color
SU60-FRUWF00-XXX	1	Sani-Kennel Ultrabase Side Panel, 60in., Freestanding, Right End Panel, U-Channel, Wire Upper Infill Material, FRP Lower Infill Material, TBD FRP Color

Classroom 6

10010768-316	13	4' x 4' Ultrabase, Fiberglass, Aurora
10010769-316	6	4' x 5' Ultrabase, Fiberglass, Aurora



Midmark Quotation

Quote Valid for 90 Days

Date Quoted: 8/13/2024

Project Information:

Project Name: City of Victorville

Project #: A241464 **Phase:** 02 **Rev:** 3

Agreement: Animal Health 2024 Pricing

Part Number	QTY	Description
BU48-NFF0000-XXX	19	Sani-Kennel Ultrabase Back Panel, 48in. wide, No Kennel Door, FRP Upper Infill, FRP Lower Infill, TBD FRP Color
RU48-SW00000-878	19	Sani-Kennel Ultrabase Rest Bench, 48in. wide, Swing Up, Beige
SF48-LRYBSNP-XXX	12	Stainless Stall Front, 48in. wide, Left Hinge, Fixed Portion Right, With Threshold, Glass Gate Infill Material, Same as Gate Stall Front, No Bowl Bracket, Panel Mounted
SF48-RLYBSNP-XXX	7	Stainless Stall Front, 48in. wide, Right Hinge, Fixed Portion Left, With Threshold, Glass Gate Infill Material, Same as Gate Stall Front, No Bowl Bracket, Panel Mounted
SU48-FDUWF00-XXX	11	Sani-Kennel Ultrabase Side Panel, 48in., Freestanding, Division Panel, U-Channel, Wire Upper Infill Material, FRP Lower Infill Material, TBD FRP Color
SU48-FLUWF00-XXX	2	Sani-Kennel Ultrabase Side Panel, 48in., Freestanding, Left End Panel, U-Channel, Wire Upper Infill Material, FRP Lower Infill Material, TBD FRP Color
SU48-FRUWF00-XXX	2	Sani-Kennel Ultrabase Side Panel, 48in., Freestanding, Right End Panel, U-Channel, Wire Upper Infill Material, FRP Lower Infill Material, TBD FRP Color
SU60-FDUWF00-XXX	5	Sani-Kennel Ultrabase Side Panel, 60in., Freestanding, Division Panel, U-Channel, Wire Upper Infill Material, FRP Lower Infill Material, TBD FRP Color
SU60-FLUWF00-XXX	1	Sani-Kennel Ultrabase Side Panel, 60in., Freestanding, Left End Panel, U-Channel, Wire Upper Infill Material, FRP Lower Infill Material, TBD FRP Color
SU60-FRUWF00-XXX	1	Sani-Kennel Ultrabase Side Panel, 60in., Freestanding, Right End Panel, U-Channel, Wire Upper Infill Material, FRP Lower Infill Material, TBD FRP Color



Midmark Quotation

Terms & Conditions

Project Information:

Project Name: City of Victorville

Project #: A241464 **Phase:** 02 **Rev:** 3

Agreement: Animal Health 2024 Pricing

Midmark Rep Information:

Project Rep: CJ Nicolas

Email: cnicolas@midmark.com

Designer Information:

Designer: Nathaniel Koluch

Email: nkoluch@midmark.com

Phone: 1-800-MIDMARK

Midmark Order Policy

- Signed drawings and verified field measurements (if applicable) are required before an order can be placed. For questions regarding these details, refer to your Midmark Representative.
- Approved payment terms are required before an order can be placed.
- Installation may be included in your quote. If installation is included, a Statement of Work will accompany the quote (exclusions apply). If installation is not included, please request a quote.
- A Midmark Representative may be able to provide you with an estimate on freight and taxes upon request.

Order Changes

- All changes should happen before the receipt of the order.
- Order changes made after receipt of an order may incur a change fee and a shipping date change. This fee will cover materials, labor, and handling costs.
- All changes must be submitted in writing. Upon review and approval of changes, the order will be moved to the next ship date.

Delayed/Rescheduled Ship Dates

- Requests to reschedule orders that have not been built will be move to the next available ship date.
- Request to reschedule or delay shipment of orders that have been built will incur storage and handling fees until shipped.

Order Cancellation

- Cancellation 48 hours from the time of order placement is subject to penalty. An assessment will be made at the time of cancellation to determine the amount of penalty, including material, labor, and handling costs.
- Cancellation must be received in writing. Non-standard color and custom configuration orders may not be canceled without penalty.

Return of Merchandise

- Made-to-order products (including but not limited to: Cabinetry, Containment, Workstations) or non-standard colors are non-returnable.

Shipping & Receiving Policy

- Orders shipped via common LTL or full truckload carrier.
- Please specify your preferred delivery date. The preferred delivery date is not guaranteed based on Midmark lead time and the carrier's availability.
- Please specify if the delivery site is NOT able to accept delivery on a full-size 53' truck and trailer, if there are steps at the delivery site, or if your location requires special delivery accommodations.
- Optional delivery services available for additional charges may include lift gate, customer-assisted inside delivery, white glove delivery, and guaranteed delivery. Contact your Midmark Representative for a quote on optional delivery services.
- Delivery should be arranged with a project coordinator from each Midmark location.
- Customer pick-up orders are subject to a handling fee. The customer is responsible for the product upon pick-up.
- Report any damaged goods or short shipments to the freight carrier and contact Midmark Corporation immediately. If concealed damage is found, it must be reported within 5 days of delivery or the time allowed based on the National Motor Freight Classification's standard, whichever is less.

Lead Times

- Contact your Midmark Sales Representative as current lead times are dynamic due to the global supply chain disruption.

No Damages For Delay

- Although Midmark will attempt to meet shipment and delivery schedules, Midmark will not be liable to the Purchaser for any damages resulting from late shipment or delivery, including but not limited to direct, indirect, economic, incidental, or consequential damage, including without limitation lost profits or income, loss of use, downtime, cover, and employee or independent contractor wages, payments, and benefits.



Project Information

Project Name: City of Victorville

Project #: A241464

Phase: 02

Rev: 3

Date: 8/13/2024

Project Rep: CJ Nicolas

cnicolas@midmark.com

Designer: Nathaniel Koluch

nkoluch@midmark.com

Phone: 1-800-MIDMARK

Project Disclaimers

N/A



Midmark Quotation

Terms & Conditions

Project Information:

Project Name: City of Victorville

Project #: A241464 **Phase:** 02 **Rev:** 3

Agreement: Animal Health 2024 Pricing

Midmark Rep Information:

Project Rep: CJ Nicolas

Email: cnicolas@midmark.com

Designer Information:

Designer: Nathaniel Koluch

Email: nkoluch@midmark.com

Phone: 1-800-MIDMARK

Midmark Order Policy

- Signed drawings and verified field measurements (if applicable) are required before an order can be placed. For questions regarding these details, refer to your Midmark Representative.
- Approved payment terms are required before an order can be placed.
- Installation may be included in your quote. If installation is included, a Statement of Work will accompany the quote (exclusions apply). If installation is not included, please request a quote.
- A Midmark Representative may be able to provide you with an estimate on freight and taxes upon request.

Order Changes

- All changes should happen before the receipt of the order.
- Order changes made after receipt of an order may incur a change fee and a shipping date change. This fee will cover materials, labor, and handling costs.
- All changes must be submitted in writing. Upon review and approval of changes, the order will be moved to the next ship date.

Delayed/Rescheduled Ship Dates

- Requests to reschedule orders that have not been built will be move to the next available ship date.
- Request to reschedule or delay shipment of orders that have been built will incur storage and handling fees until shipped.

Order Cancellation

- Cancellation 48 hours from the time of order placement is subject to penalty. An assessment will be made at the time of cancellation to determine the amount of penalty, including material, labor, and handling costs.
- Cancellation must be received in writing. Non-standard color and custom configuration orders may not be canceled without penalty.

Return of Merchandise

- Made-to-order products (including but not limited to: Cabinetry, Containment, Workstations) or non-standard colors are non-returnable.

Shipping & Receiving Policy

- Orders shipped via common LTL or full truckload carrier.
- Please specify your preferred delivery date. The preferred delivery date is not guaranteed based on Midmark lead time and the carrier's availability.
- Please specify if the delivery site is NOT able to accept delivery on a full-size 53' truck and trailer, if there are steps at the delivery site, or if your location requires special delivery accommodations.
- Optional delivery services available for additional charges may include lift gate, customer-assisted inside delivery, white glove delivery, and guaranteed delivery. Contact your Midmark Representative for a quote on optional delivery services.
- Delivery should be arranged with a project coordinator from each Midmark location.
- Customer pick-up orders are subject to a handling fee. The customer is responsible for the product upon pick-up.
- Report any damaged goods or short shipments to the freight carrier and contact Midmark Corporation immediately. If concealed damage is found, it must be reported within 5 days of delivery or the time allowed based on the National Motor Freight Classification's standard, whichever is less.

Lead Times

- Contact your Midmark Sales Representative as current lead times are dynamic due to the global supply chain disruption.

No Damages For Delay

- Although Midmark will attempt to meet shipment and delivery schedules, Midmark will not be liable to the Purchaser for any damages resulting from late shipment or delivery, including but not limited to direct, indirect, economic, incidental, or consequential damage, including without limitation lost profits or income, loss of use, downtime, cover, and employee or independent contractor wages, payments, and benefits.



Approvals

Project Name: City of Victorville

Project #: A241464

Phase: 02 **Rev:** 3

I acknowledge the following for all applicable pages:

	Approved	Revised to Reflect
Colors & Finishes	<input type="checkbox"/>	<input type="checkbox"/> _____
Configurations, Sizes & Field Measurements	<input type="checkbox"/>	<input type="checkbox"/> _____
Terms, Conditions & Delivery Instructions	<input type="checkbox"/>	<input type="checkbox"/> _____
Signature _____		Date _____



Aurora
Fiberglass



Beige
FRP



TBD FRP Color
FRP



www.midmark.com
design@midmark.com
Phone: 1-800-MIDMARK

Project Name: City of Victorville

Project #: A241464

Phase: 02

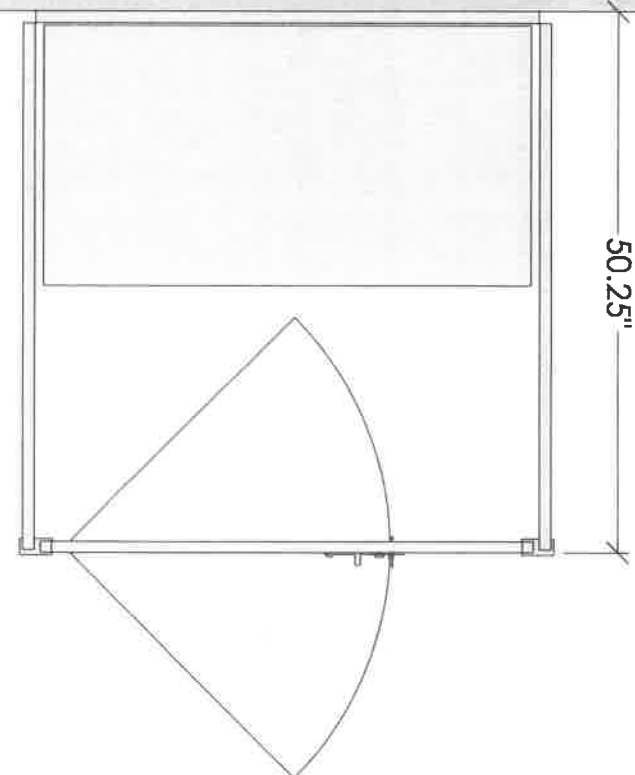
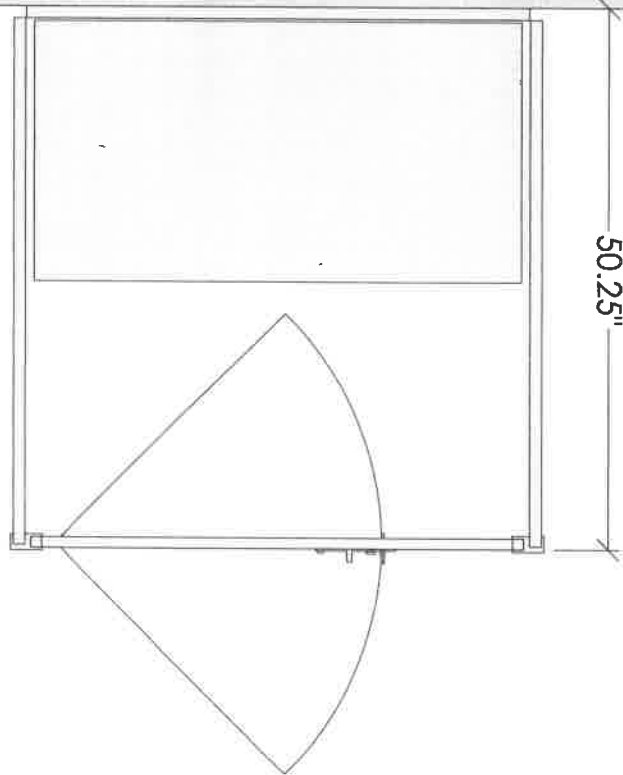
Rev: 3

Signed Drawings Required To
Process Order

Room Plan View

(Signature)

(Date)



Additional 4x4 Kennels



www.midmark.com
design@midmark.com
Phone: 1-800-MIDMARK

Project Name: City of Victorville

Project #: A241464

Phase: 02

Rev: 3

Signed Drawings Required To
Process Order

Dimensions: 49.625" x 50.25" x 84.5"

Finish: 878-Beige, XXX-TBD FRP Color

Threshold: Included

Note: Field Measurement Required

Accessories:

1001XXXX-XXX | Ultra Base

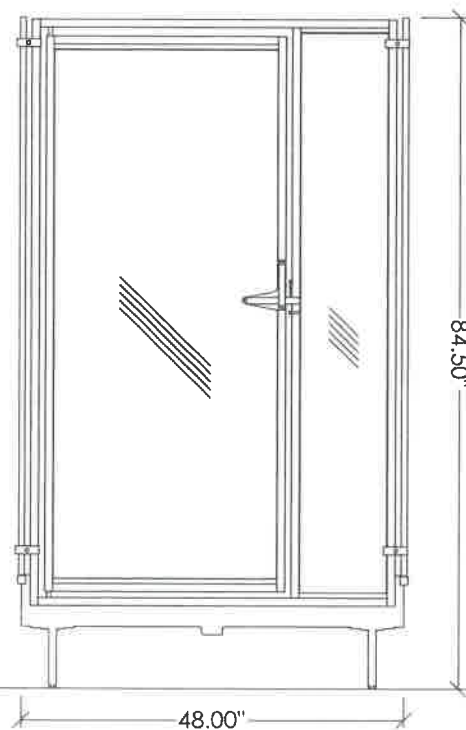
RUXX00000-XXX | Rest Bench

QTY: 1

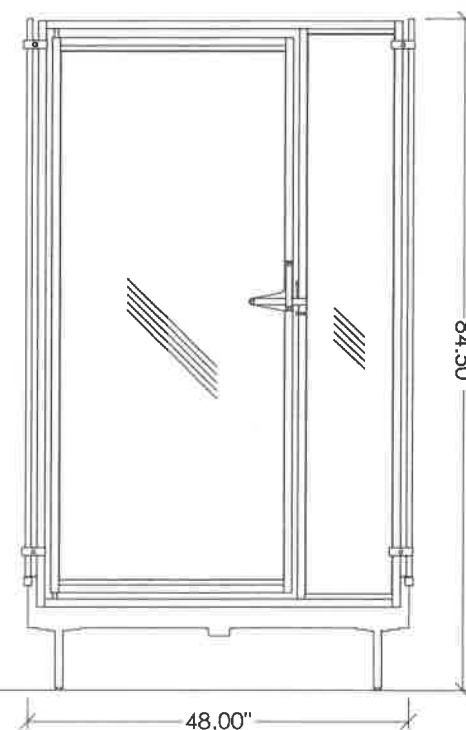
QTY: 1

(Signature)

(Date)



SF48-LRYBSNP-XXX



SF48-LRYBSNP-XXX

Additional 4x4 Kennels



www.midmark.com
design@midmark.com
Phone: 1-800-MIDMARK

Project Name: City of Victorville

Project #: A241464

Phase: 02

Rev: 3

**Signed Drawings Required To
Process Order**

Kennel 3D View

(Signature)

(Date)



Additional 4x4 Kennels



www.midmark.com
design@midmark.com
Phone: 1-800-MIDMARK

Project Name: City of Victorville

Project #: A241464

Phase: 02

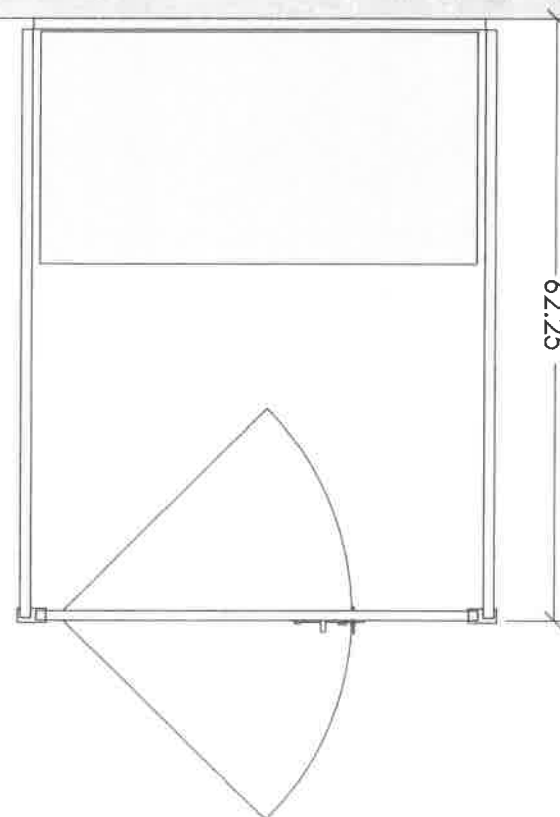
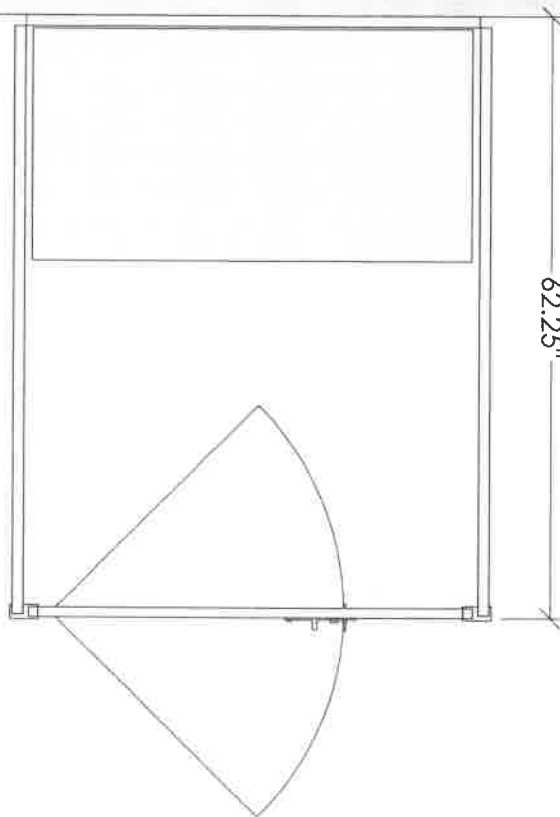
Rev: 3

Signed Drawings Required To
Process Order

Room Plan View

(Signature)

(Date)



Additional 4x5 Kennels



www.midmark.com
design@midmark.com
Phone: 1-800-MIDMARK

Project Name: City of Victorville

Project #: A241464

Phase: 02

Rev: 3

**Signed Drawings Required To
Process Order**

Dimensions: 49.625" x 62.25" x 84.5"

Accessories:

Finish: 878-Beige, XXX-TBD FRP Color

1001XXXX-XXX | Ultra Base

QTY: 1

Threshold: Included

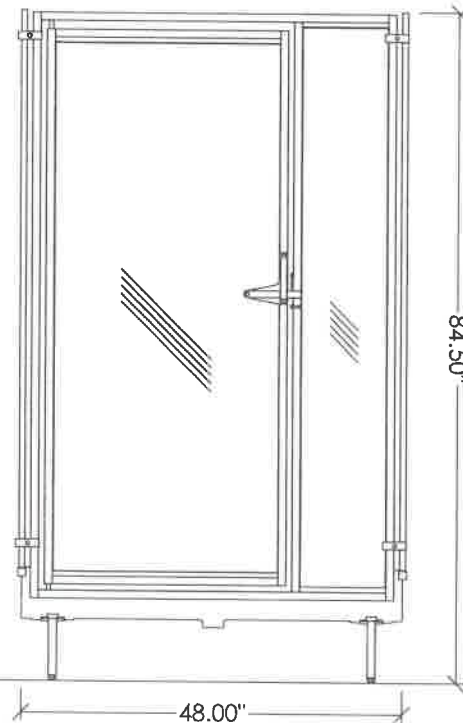
RUXX00000-XXX | Rest Bench

QTY: 1

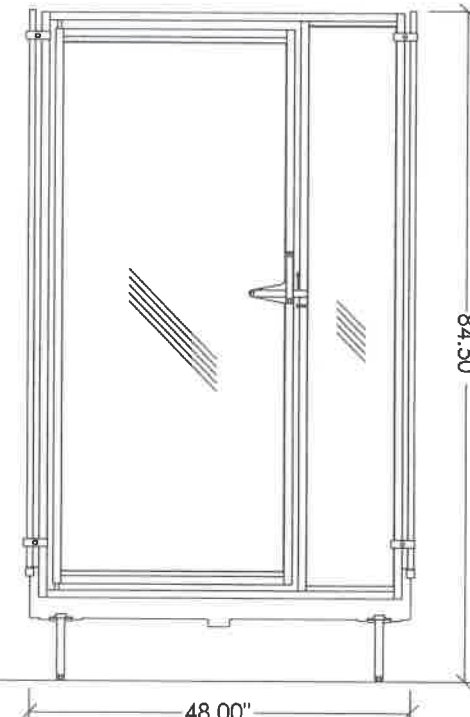
Note: Field Measurement Required

(Signature)

(Date)



SF48-LRYBSNP-XXX



SF48-LRYBSNP-XXX

Additional 4x5 Kennels



www.midmark.com
design@midmark.com
Phone: 1-800-MIDMARK

Project Name: City of Victorville

Project #: A241464

Phase: 02

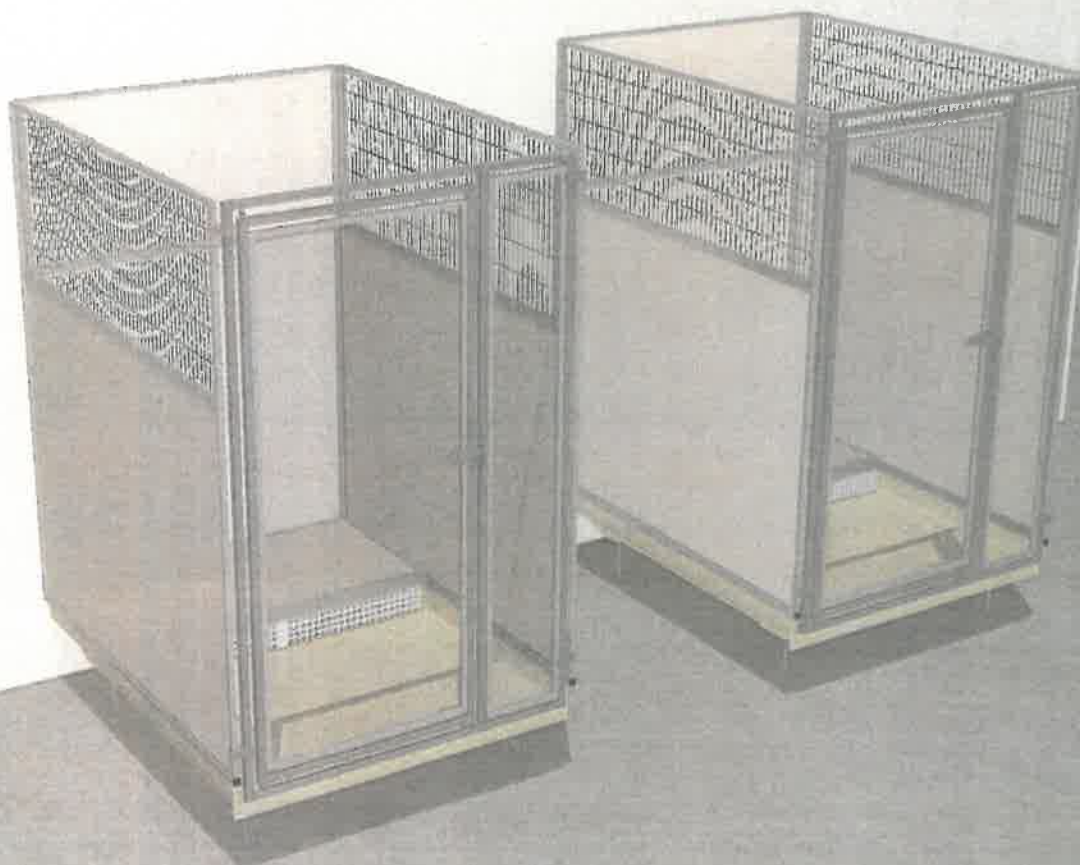
Rev: 3

Signed Drawings Required To
Process Order

Kennel 3D View

(Signature)

(Date)



Additional 4x5 Kennels



www.midmark.com
design@midmark.com
Phone: 1-800-MIDMARK

Project Name: City of Victorville

Project #: A241464

Phase: 02

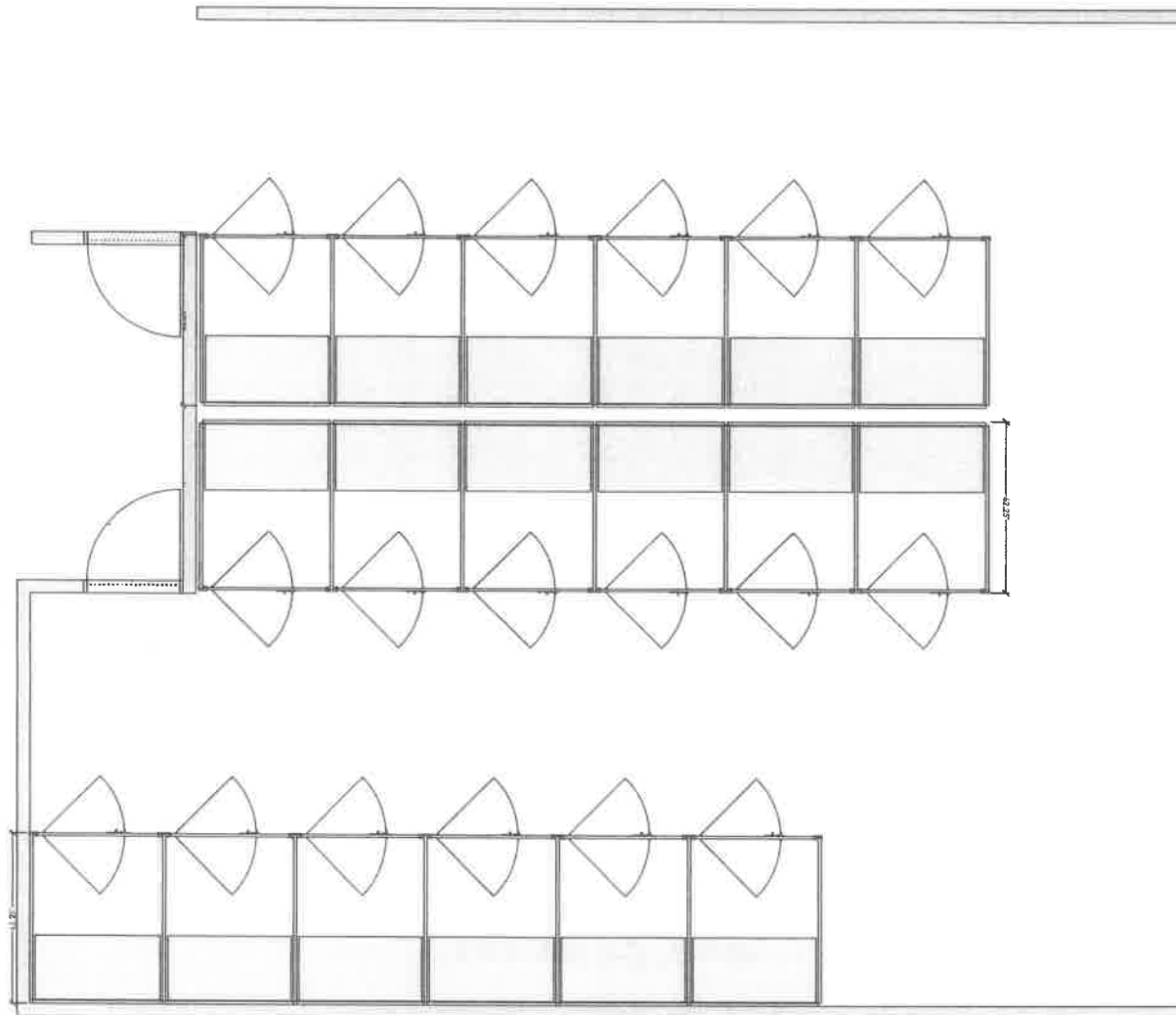
Rev: 3

Signed Drawings Required To
Process Order

Room Plan View

(Signature)

(Date)



Cafeteria



www.midmark.com
design@midmark.com
Phone: 1-800-MIDMARK

Project Name: City of Victorville

Project #: A241464

Phase: 02

Rev: 3

Signed Drawings Required To
Process Order

Dimensions: 289.625" x 62.25" x 84.5"

Finish: 878-Beige, XXX-TBD FRP Color

Threshold: Included

Note: Field Measurement Required

Accessories:

1001XXXX-XXX | Ultra Base

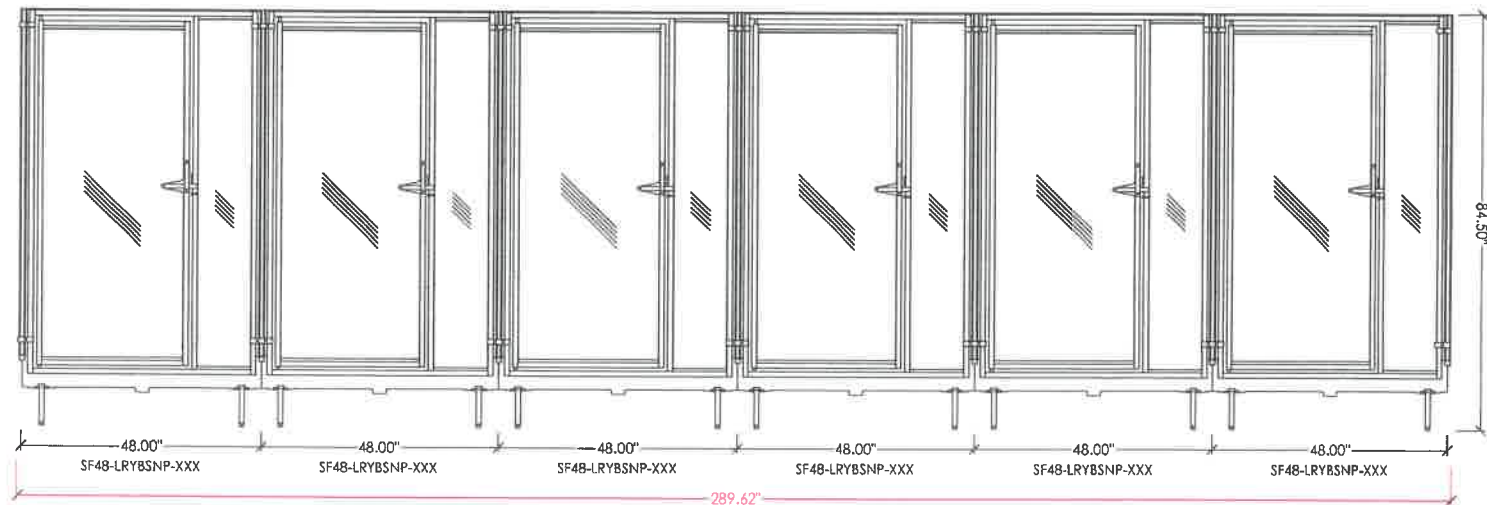
RUXX00000-XXX | Rest Bench

QTY: 6

QTY: 6

(Signature)

(Date)



Cafeteria



www.midmark.com
design@midmark.com
Phone: 1-800-MIDMARK

Project Name: City of Victorville

Project #: A241464

Phase: 02

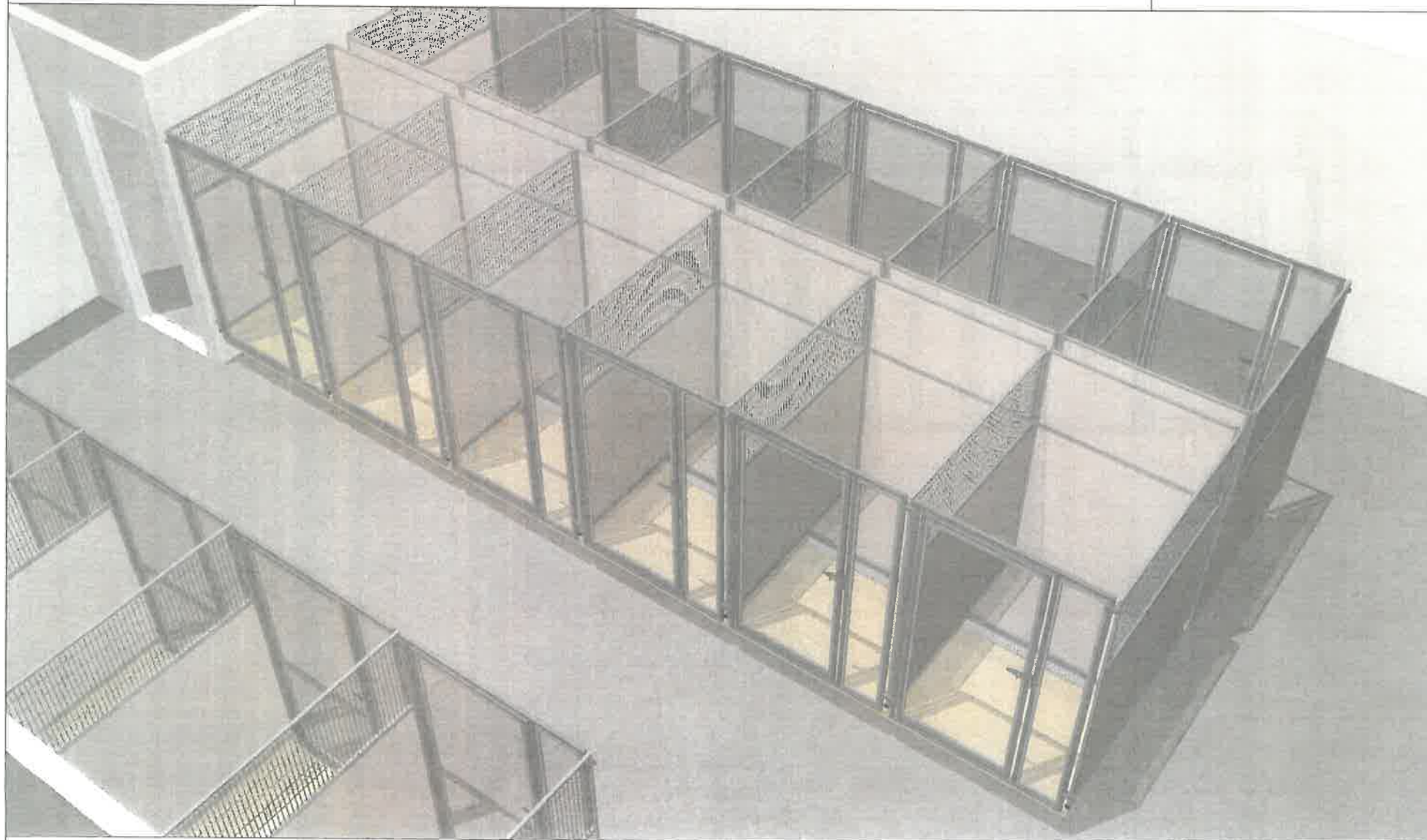
Rev: 3

Signed Drawings Required To
Process Order

Kennel 3D View

(Signature)

(Date)

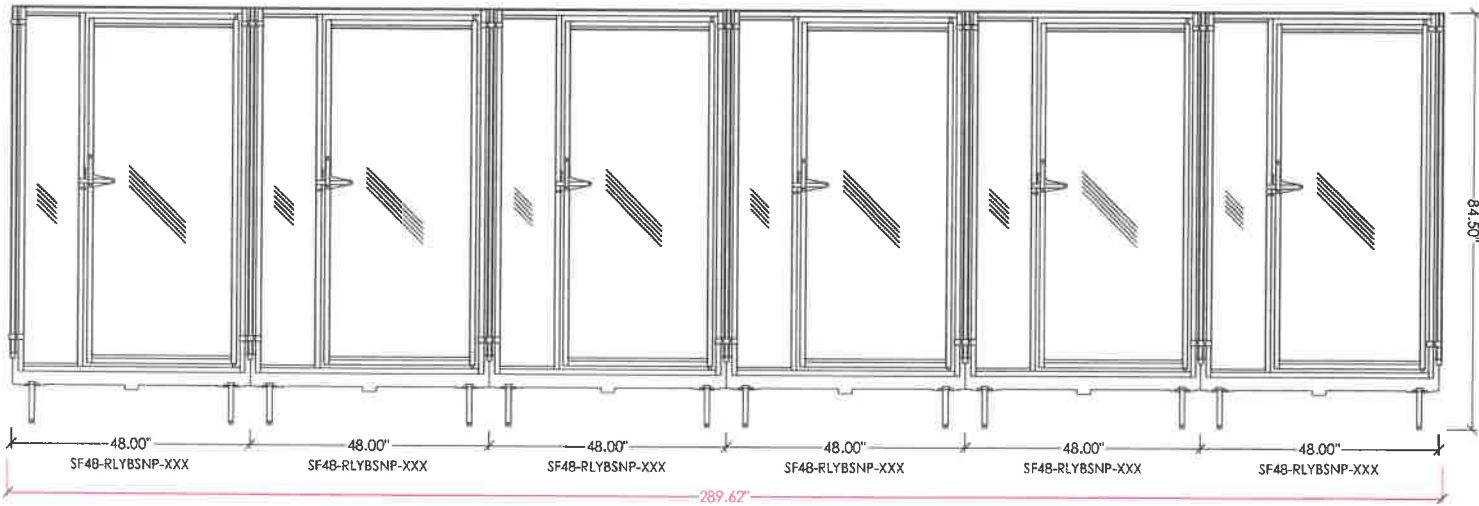


Cafeteria



www.midmark.com
design@midmark.com
Phone: 1-800-MIDMARK

Project Name: City of Victorville		Project #: A241464	Phase: 02	Rev: 3	Signed Drawings Required To Process Order	
Dimensions:	289.625" x 62.25" x 84.5"	Accessories:				
Finish:	878-Beige, XXX-TBD FRP Color	1001XXX-XXX Ultra Base		QTY: 6		
Threshold:	Included	RUXX00000-XXX Rest Bench		QTY: 6		
Note:	Field Measurement Required					
					(Signature)	(Date)



Cafeteria



www.midmark.com
design@midmark.com
Phone: 1-800-MIDMARK

Project Name: City of Victorville

Project #: A241464

Phase: 02

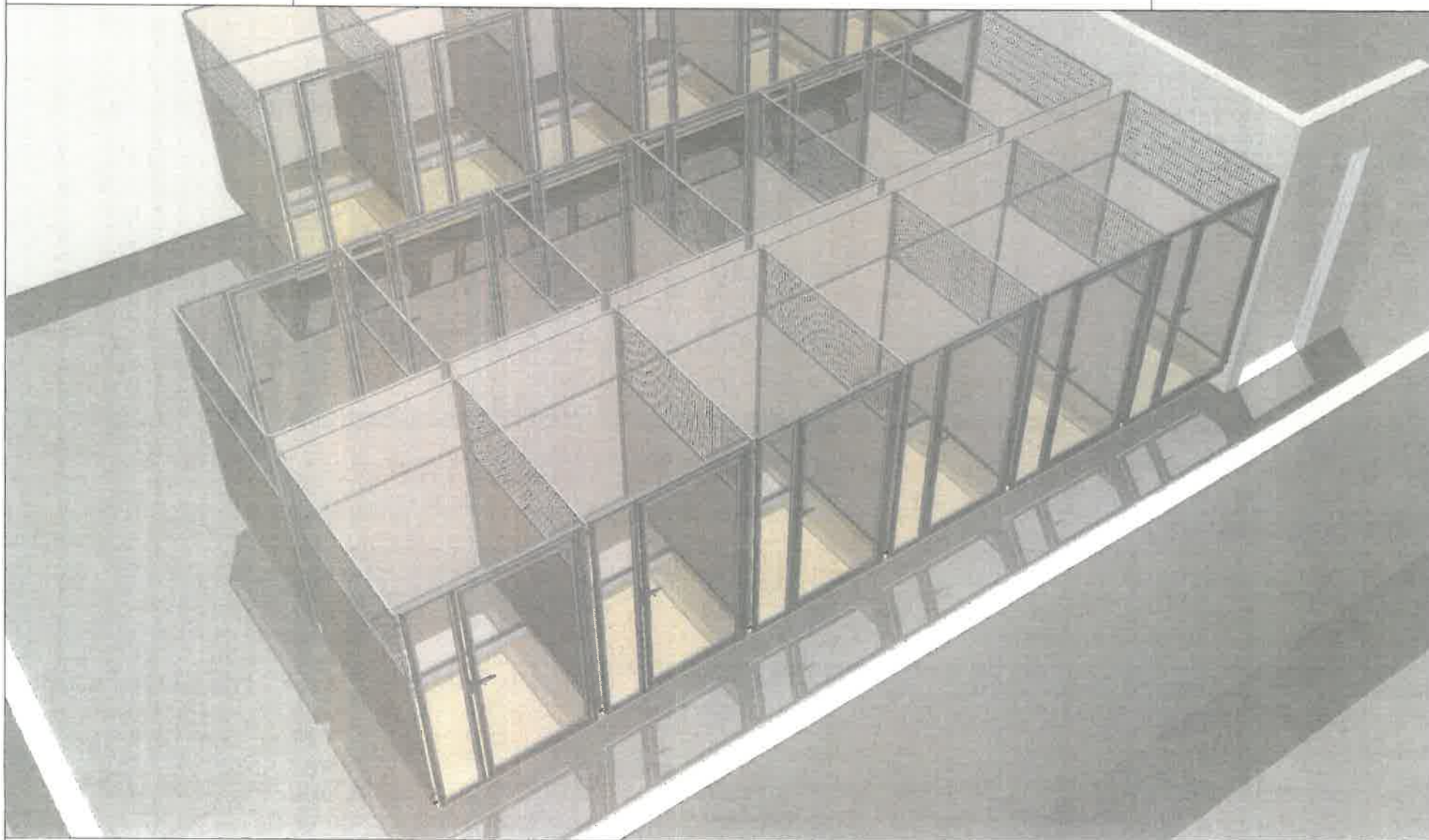
Rev: 3

Signed Drawings Required To
Process Order

Kennel 3D View

(Signature)

(Date)



Cafeteria



www.midmark.com
design@midmark.com
Phone: 1-800-MIDMARK

Project Name: City of Victorville

Project #: A241464

Phase: 02

Rev: 3

Signed Drawings Required To
Process Order

Dimensions: 289.625" x 62.25" x 84.5"

Finish: 878-Beige, XXX-TBD FRP Color

Threshold: Included

Note: Field Measurement Required

Accessories:

1001XXXX-XXX | Ultra Base

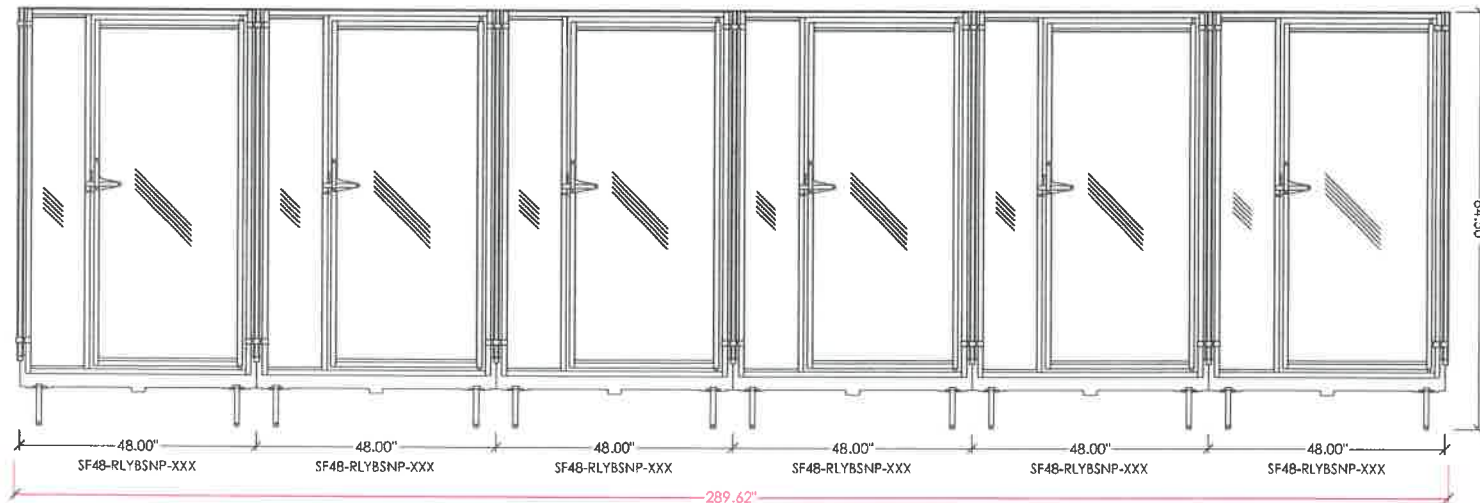
RUXX00000-XXX | Rest Bench

QTY: 6

QTY: 6

(Signature)

(Date)



Cafeteria



www.midmark.com
design@midmark.com
Phone: 1-800-MIDMARK

Project Name: City of Victorville

Project #: A241464

Phase: 02

Rev: 3

Signed Drawings Required To
Process Order

Kennel 3D View

(Signature)

(Date)



Cafeteria



www.midmark.com
design@midmark.com
Phone: 1-800-MIDMARK

Project Name: City of Victorville

Project #: A241464

Phase: 02

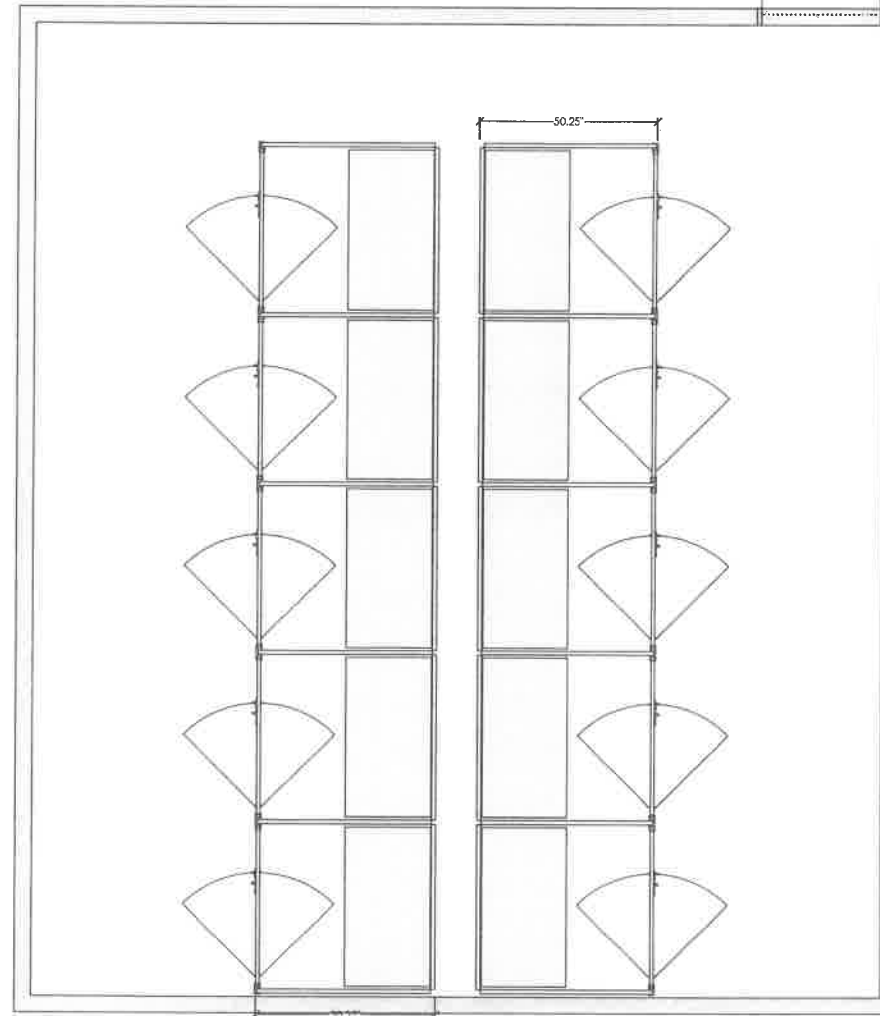
Rev: 3

Signed Drawings Required To
Process Order

Room Plan View

(Signature)

(Date)



Classroom 4



www.midmark.com
design@midmark.com
Phone: 1-800-MIDMARK

Project Name: City of Victorville

Project #: A241464

Phase: 02

Rev: 3

Signed Drawings Required To
Process Order

Dimensions: 241.625" x 50.25" x 84.5"

Finish: 878-Beige, XXX-TBD FRP Color

Threshold: Included

Note: Field Measurement Required

Accessories:

1001XXXX-XXX | Ultra Base

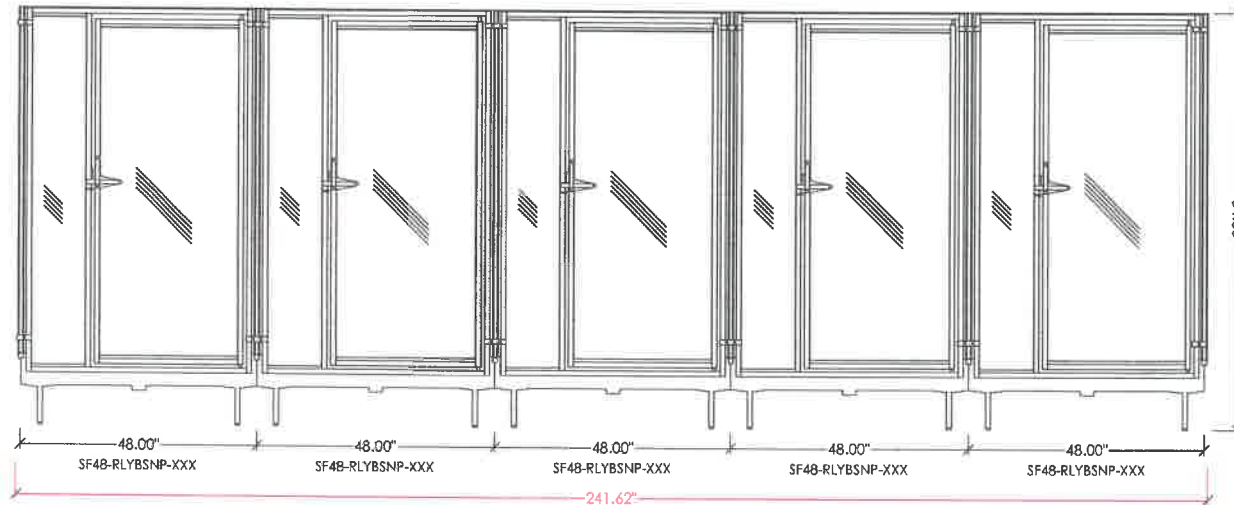
RUXX00000-XXX | Rest Bench

QTY: 5

QTY: 5

(Signature)

(Date)





www.midmark.com
design@midmark.com
Phone: 1-800-MIDMARK

Project Name: City of Victorville

Project #: A241464

Phase: 02

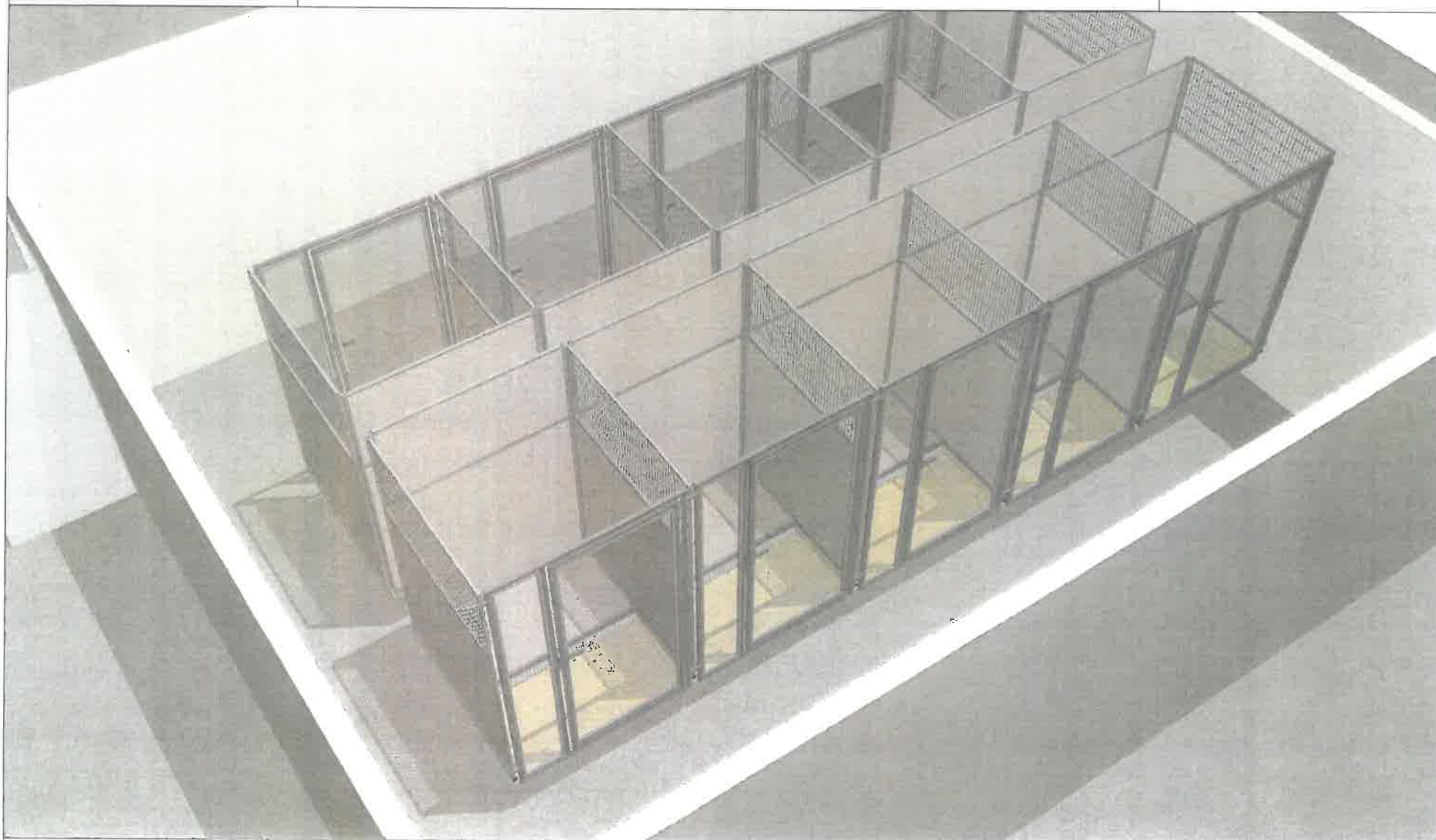
Rev: 3

Signed Drawings Required To
Process Order

Kennel 3D View

(Signature)

(Date)



Classroom 4



www.midmark.com
design@midmark.com
Phone: 1-800-MIDMARK

Project Name: City of Victorville

Project #: A241464

Phase: 02

Rev: 3

**Signed Drawings Required To
Process Order**

Dimensions: 241.625" x 50.25" x 84.5"

Accessories:

Finish: 878-Beige, XXX-TBD FRP Color

1001XXXX-XXX | Ultra Base

QTY: 5

Threshold: Included

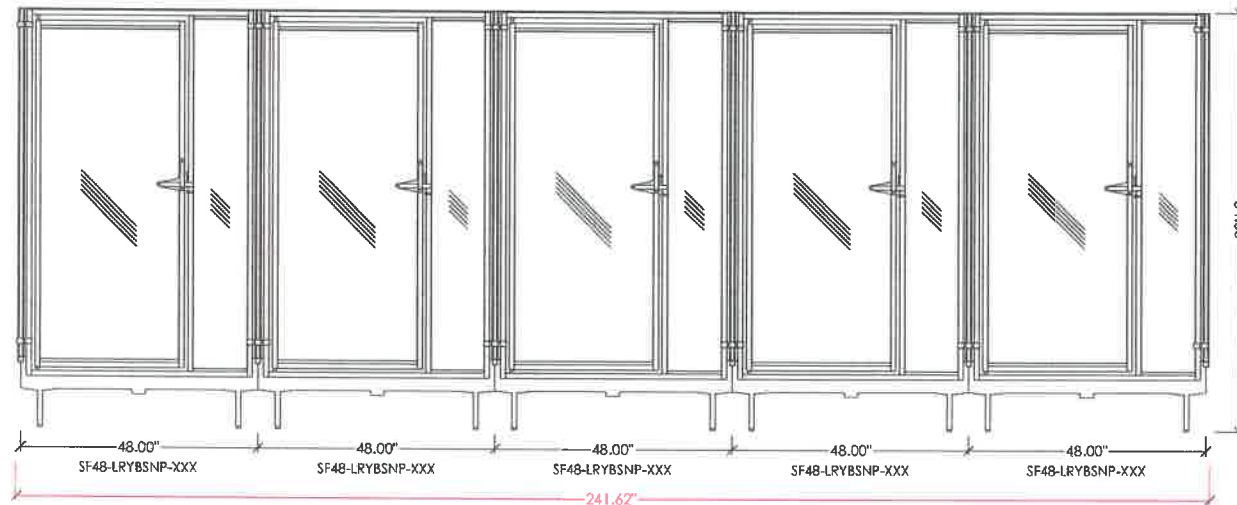
RUXX00000-XXX | Rest Bench

QTY: 5

Note: Field Measurement Required

(Signature)

(Date)





www.midmark.com
design@midmark.com
Phone: 1-800-MIDMARK

Project Name: City of Victorville

Project #: A241464

Phase: 02

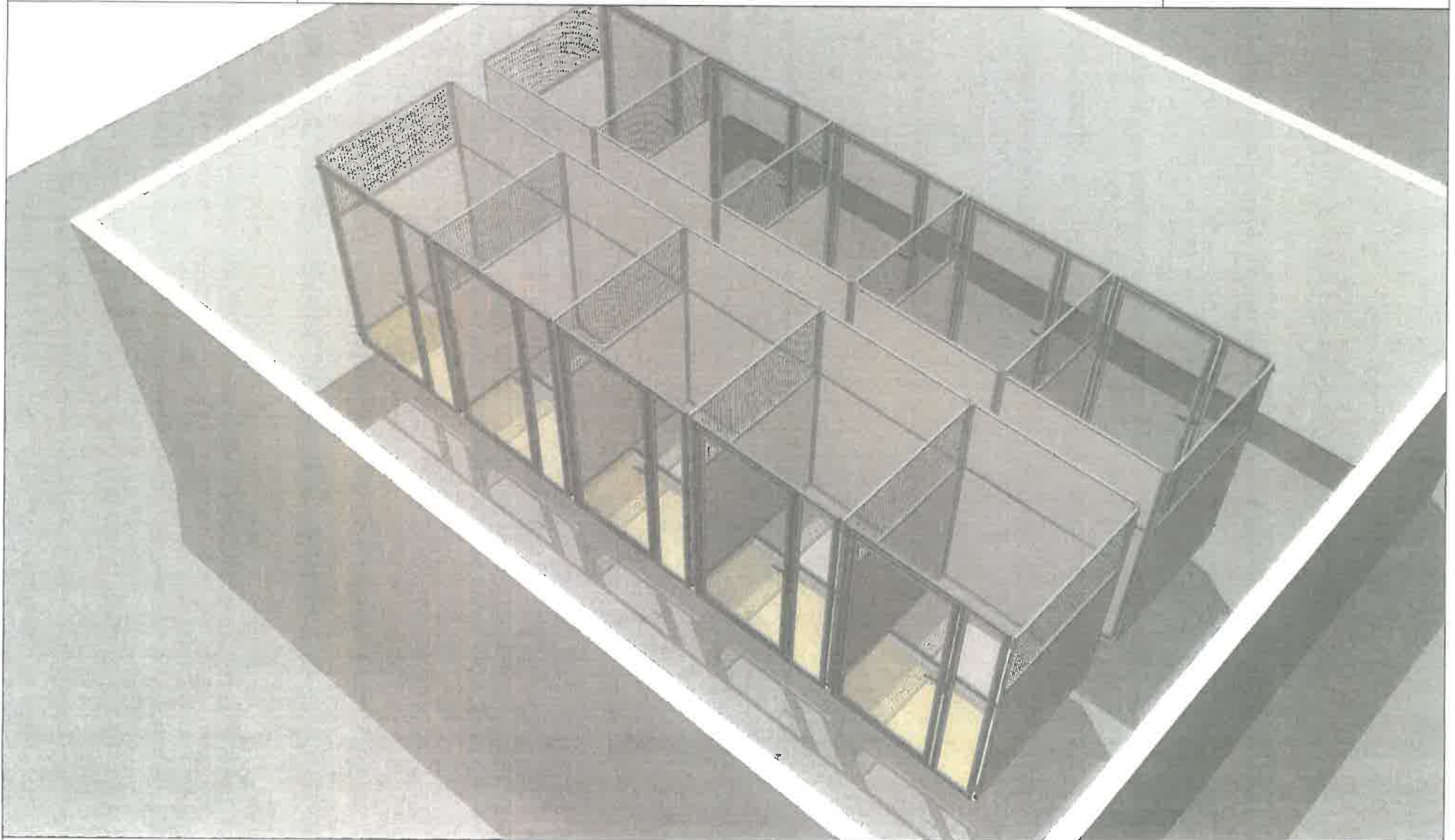
Rev: 3

Signed Drawings Required To
Process Order

Kennel 3D View

(Signature)

(Date)



Classroom 4



www.midmark.com
design@midmark.com
Phone: 1-800-MIDMARK

Project Name: City of Victorville

Project #: A241464

Phase: 02

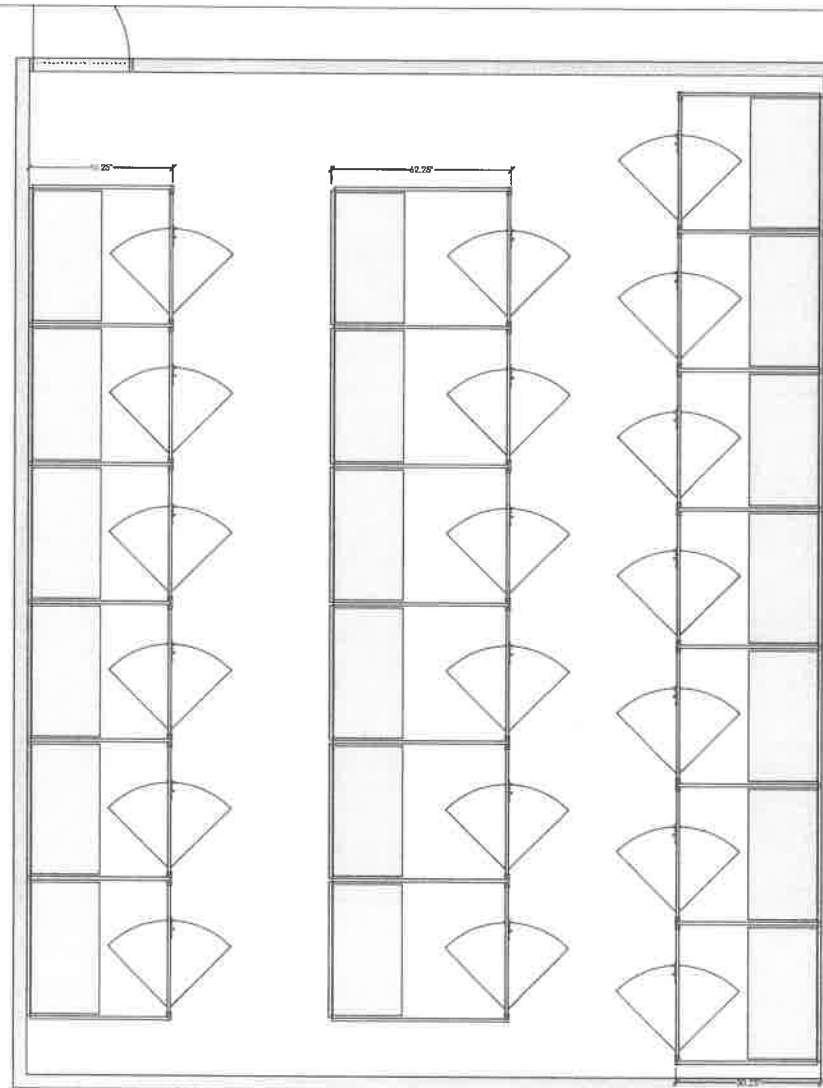
Rev: 3

Signed Drawings Required To
Process Order

Room Plan View

(Signature)

(Date)



Classroom 5

Drawing Template: -

Revision: -

Change Order: -

22/36



www.midmark.com
design@midmark.com
Phone: 1-800-MIDMARK

Project Name: City of Victorville

Project #: A241464

Phase: 02

Rev: 3

Signed Drawings Required To
Process Order

Dimensions: 289.625" x 62.25" x 84.5"

Finish: 878-Beige, XXX-TBD FRP Color

Threshold: Included

Note: Field Measurement Required

Accessories:

1001XXXX-XXX | Ultra Base

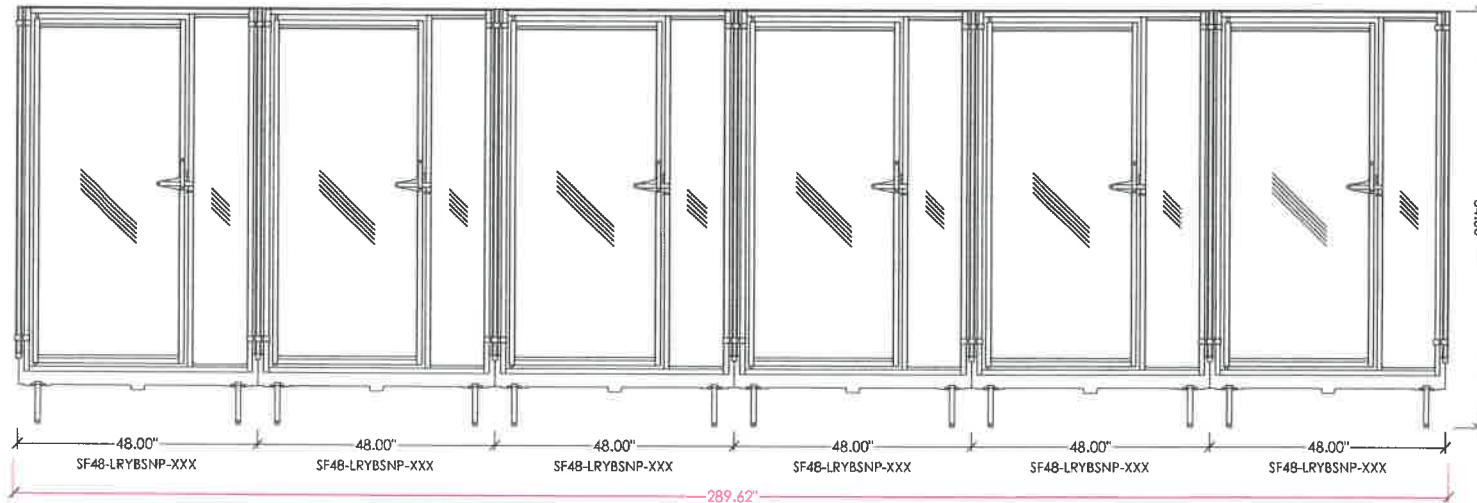
RUXX00000-XXX | Rest Bench

QTY: 6

QTY: 6

(Signature)

(Date)



Classroom 5

Drawing Template: -

Revision: -

Change Order: -

23/36



www.midmark.com
design@midmark.com
Phone: 1-800-MIDMARK

Project Name: City of Victorville

Project #: A241464

Phase: 02

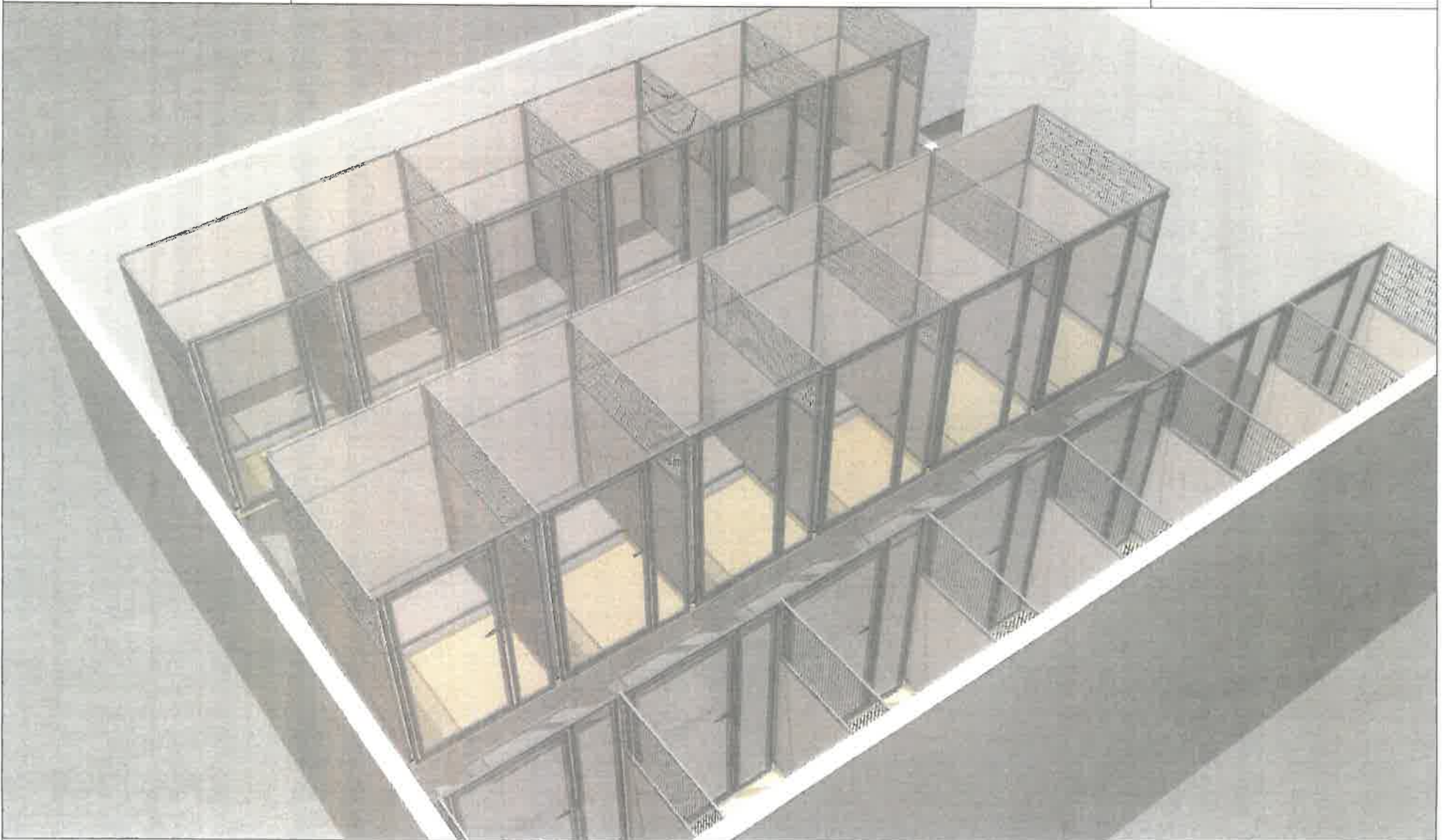
Rev: 3

Signed Drawings Required To
Process Order

Kennel 3D View

(Signature)

(Date)



Classroom 5



www.midmark.com
design@midmark.com
Phone: 1-800-MIDMARK

Project Name: City of Victorville

Project #: A241464

Phase: 02

Rev: 3

Signed Drawings Required To
Process Order

Dimensions: 337.625" x 50.25" x 84.5"

Finish: 878-Beige, XXX-TBD FRP Color

Threshold: Included

Note: Field Measurement Required

Accessories:

1001XXXX-XXX | Ultra Base

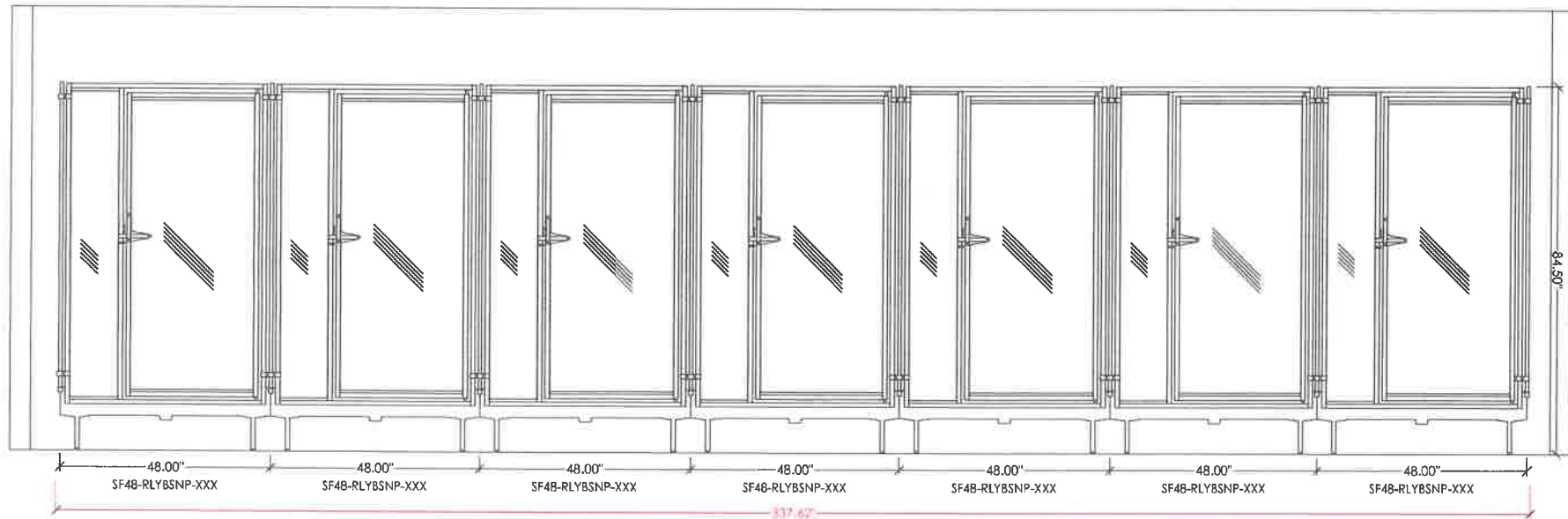
RUXX00000-XXX | Rest Bench

QTY: 7

QTY: 7

(Signature)

(Date)



Classroom 5

Drawing Template: -

Revision: -

Change Order: -

25/36



www.midmark.com
design@midmark.com
Phone: 1-800-MIDMARK

Project Name: City of Victorville

Project #: A241464

Phase: 02

Rev: 3

Signed Drawings Required To
Process Order

Kennel 3D View

(Signature)

(Date)



Classroom 5



www.midmark.com
design@midmark.com
Phone: 1-800-MIDMARK

Project Name: City of Victorville

Project #: A241464

Phase: 02

Rev: 3

Signed Drawings Required To
Process Order

Dimensions: 289.625" x 50.25" x 84.5"

Finish: 878-Beige, XXX-TBD FRP Color

Threshold: Included

Note: Field Measurement Required

Accessories:

1001XXXX-XXX | Ultra Base

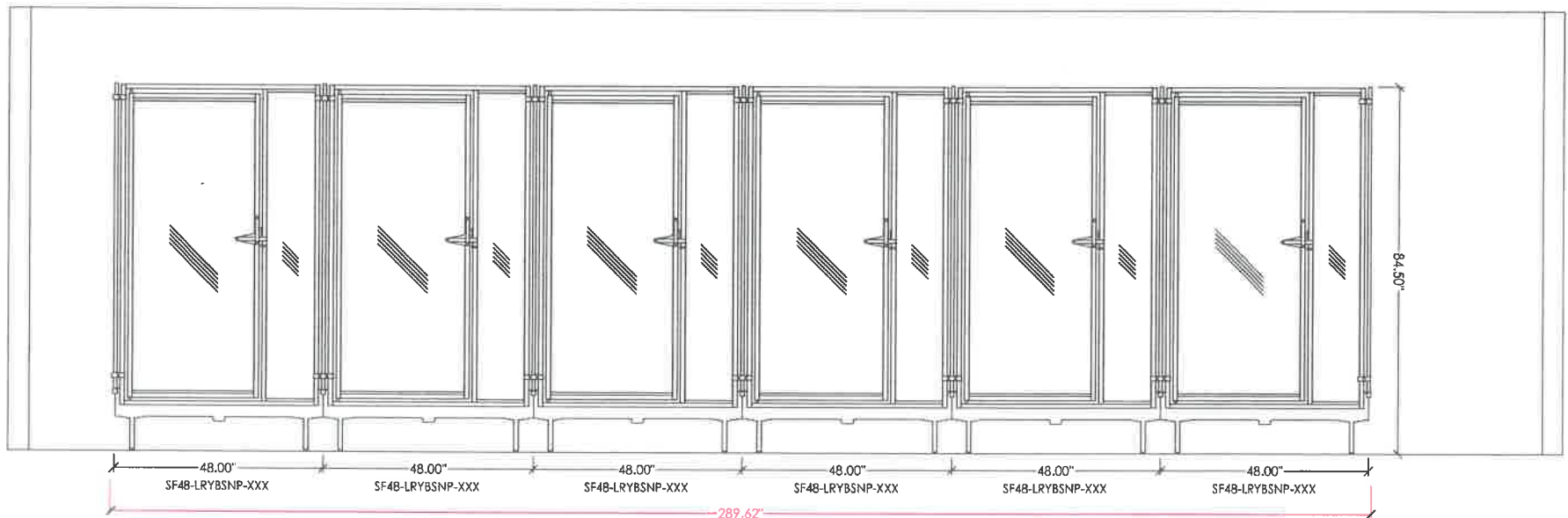
RUXX00000-XXX | Rest Bench

QTY: 6

QTY: 6

(Signature)

(Date)



Classroom 5

Drawing Template: -

Revision: -

Change Order: -

27/36



www.midmark.com
design@midmark.com
Phone: 1-800-MIDMARK

Project Name: City of Victorville

Project #: A241464

Phase: 02

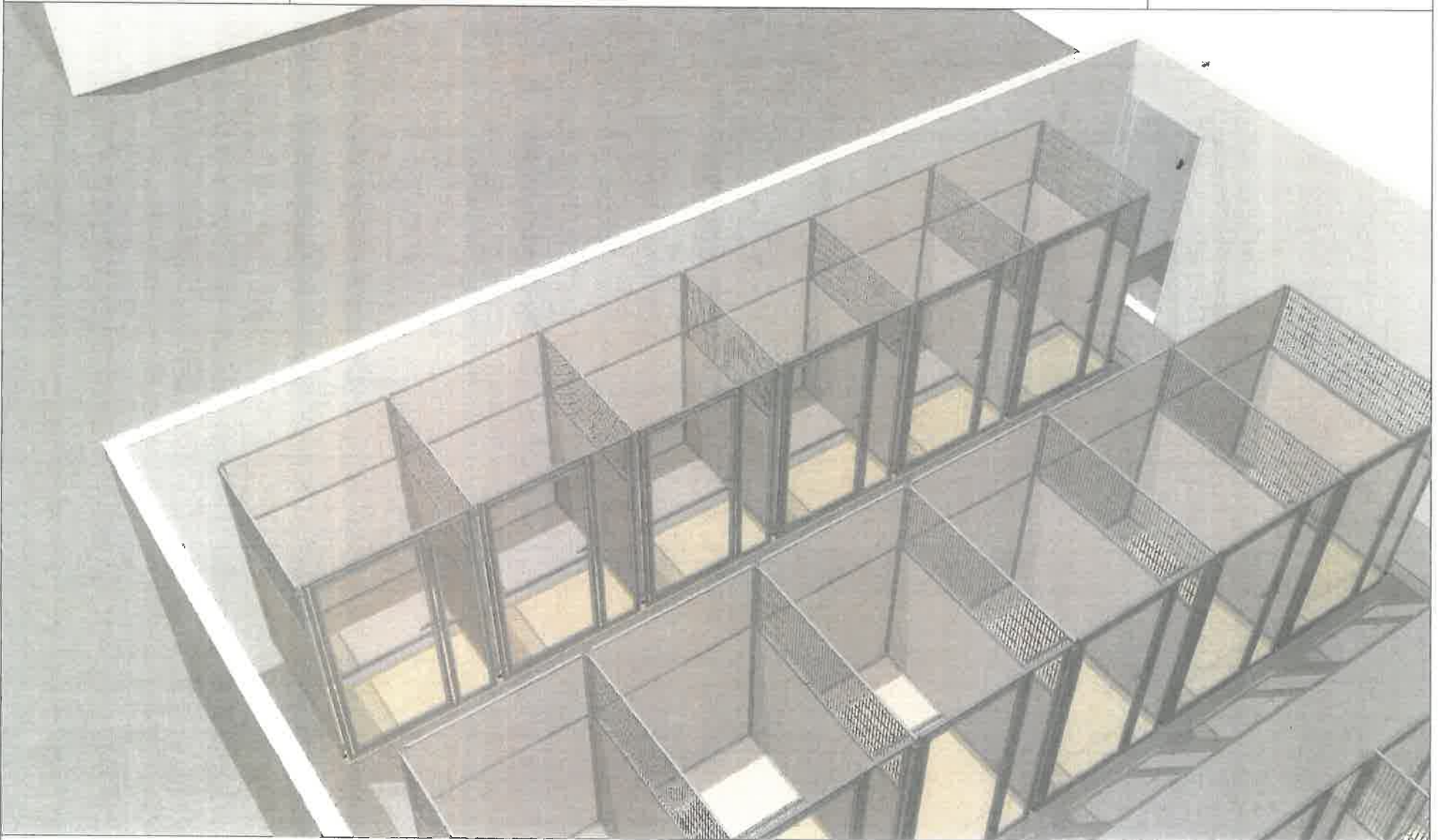
Rev: 3

Signed Drawings Required To
Process Order

Kennel 3D View

(Signature)

(Date)



Classroom 5



www.midmark.com
design@midmark.com
Phone: 1-800-MIDMARK

Project Name: City of Victorville

Project #: A241464

Phase: 02

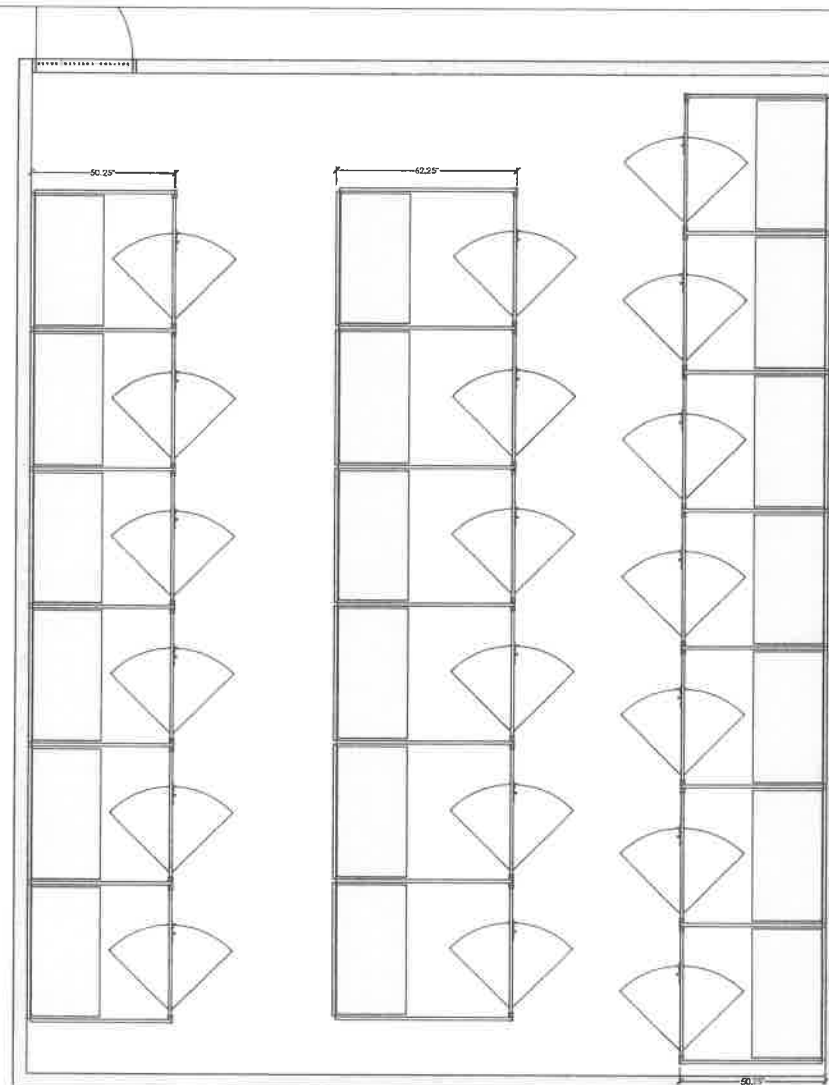
Rev: 3

Signed Drawings Required To
Process Order

Room Plan View

(Signature)

(Date)



Classroom 6

Drawing Template: -

Revision: -

Change Order: -

29/36



www.midmark.com
design@midmark.com
Phone: 1-800-MIDMARK

Project Name: City of Victorville

Project #: A241464

Phase: 02

Rev: 3

Signed Drawings Required To
Process Order

Dimensions: 337.625" x 50.25" x 84.5"

Finish: 878-Beige, XXX-TBD FRP Color

Threshold: Included

Note: Field Measurement Required

Accessories:

1001XXXX-XXX | Ultra Base

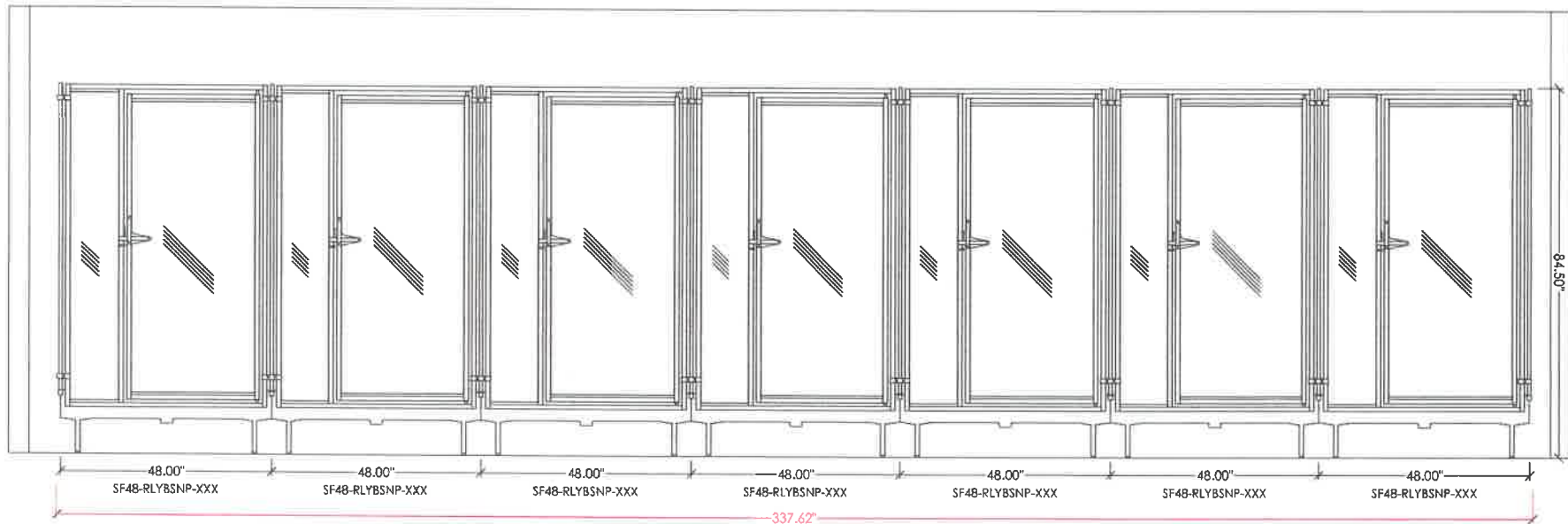
RUXX00000-XXX | Rest Bench

QTY: 7

QTY: 7

(Signature)

(Date)





www.midmark.com
design@midmark.com
Phone: 1-800-MIDMARK

Project Name: City of Victorville

Project #: A241464

Phase: 02

Rev: 3

**Signed Drawings Required To
Process Order**

Kennel 3D View

(Signature)

(Date)



Classroom 6



www.midmark.com
design@midmark.com
Phone: 1-800-MIDMARK

Project Name: City of Victorville

Project #: A241464

Phase: 02

Rev: 3

Signed Drawings Required To
Process Order

Dimensions: 289.625" x 50.25" x 84.5"

Finish: 878-Beige, XXX-TBD FRP Color

Threshold: Included

Note: Field Measurement Required

Accessories:

1001XXXX-XXX | Ultra Base

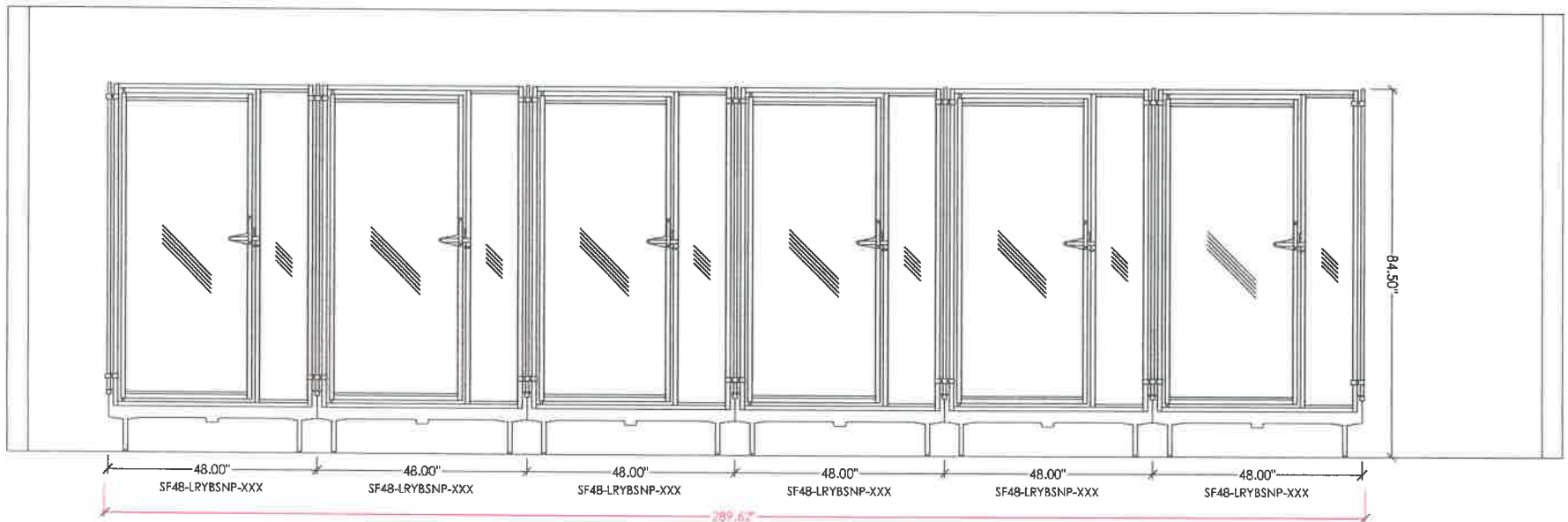
RUXX00000-XXX | Rest Bench

QTY: 6

QTY: 6

(Signature)

(Date)



Classroom 6

Drawing Template: -

Revision: -

Change Order: -

32/36



www.midmark.com
design@midmark.com
Phone: 1-800-MIDMARK

Project Name: City of Victorville

Project #: A241464

Phase: 02

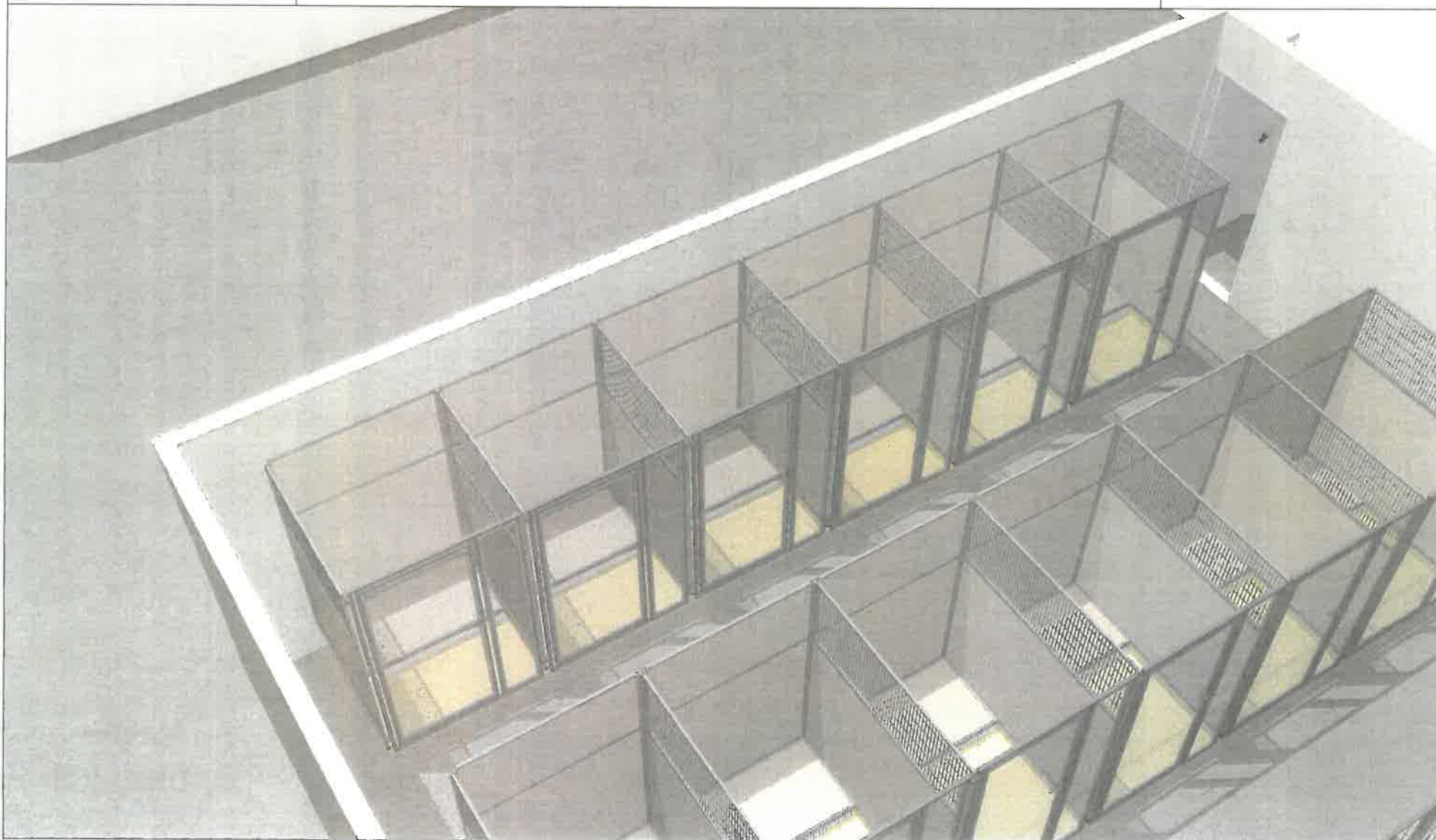
Rev: 3

Signed Drawings Required To
Process Order

Kennel 3D View

(Signature)

(Date)



Classroom 6



www.midmark.com
design@midmark.com
Phone: 1-800-MIDMARK

Project Name: City of Victorville

Project #: A241464

Phase: 02

Rev: 3

Signed Drawings Required To
Process Order

Dimensions: 289.625" x 62.25" x 84.5"

Finish: 878-Beige, XXX-TBD FRP Color

Threshold: Included

Note: Field Measurement Required

Accessories:

1001XXXX-XXX | Ultra Base

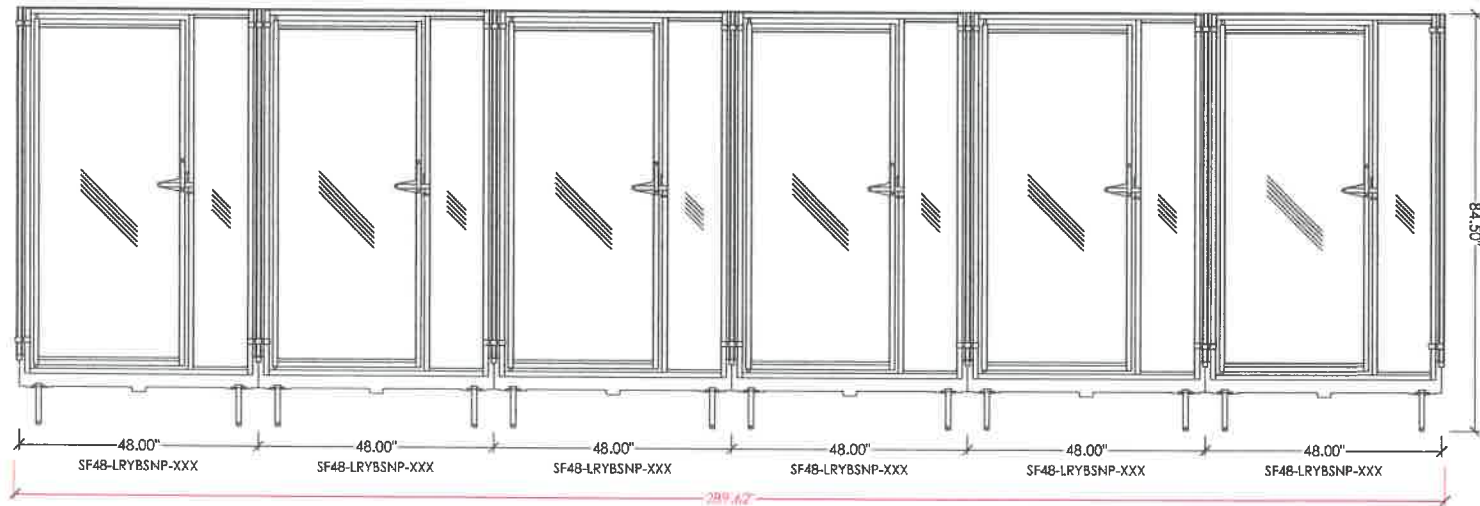
RUXX00000-XXX | Rest Bench

QTY: 6

QTY: 6

(Signature)

(Date)





www.midmark.com
design@midmark.com
Phone: 1-800-MIDMARK

Project Name: City of Victorville

Project #: A241464

Phase: 02

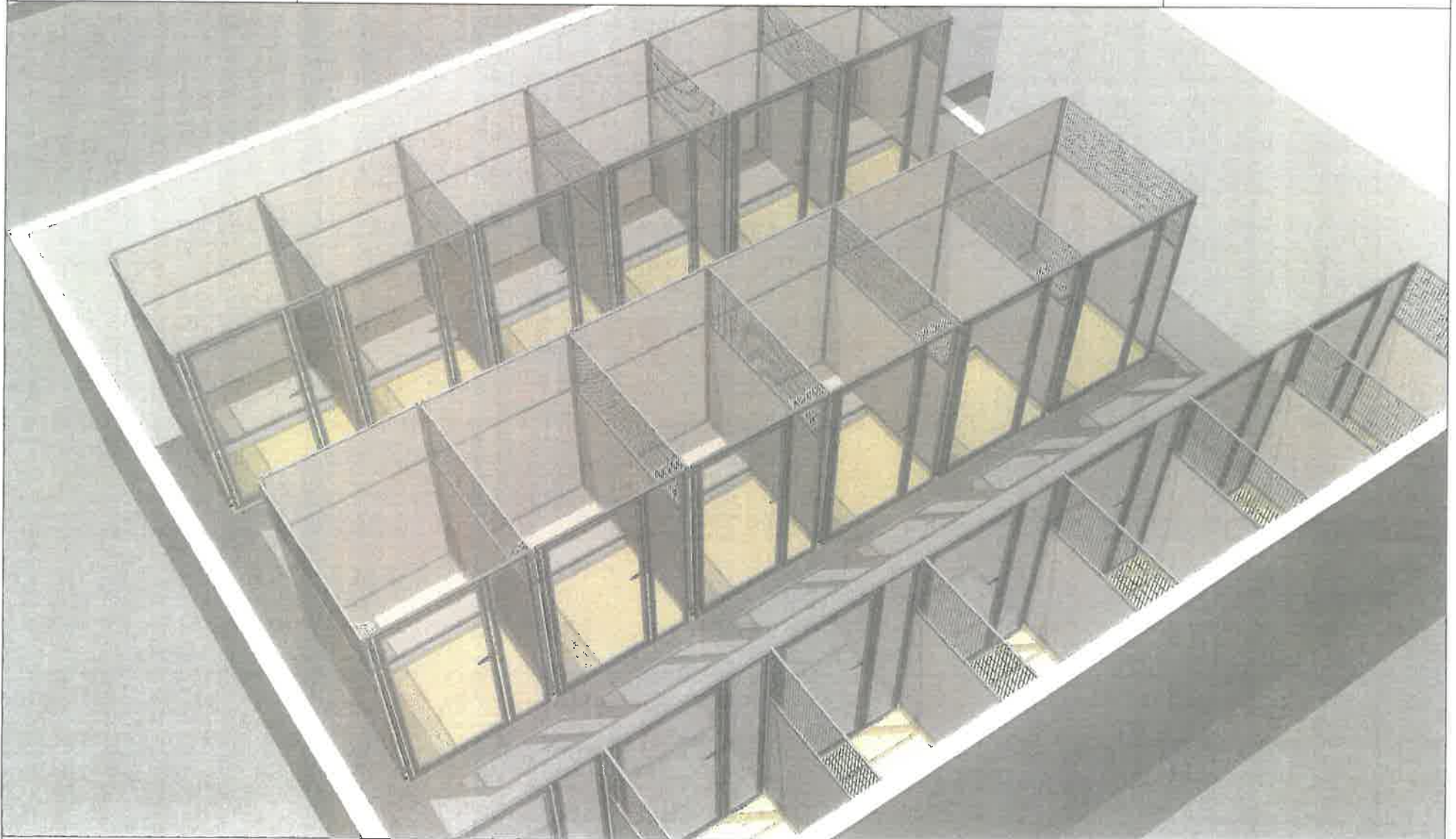
Rev: 3

Signed Drawings Required To
Process Order

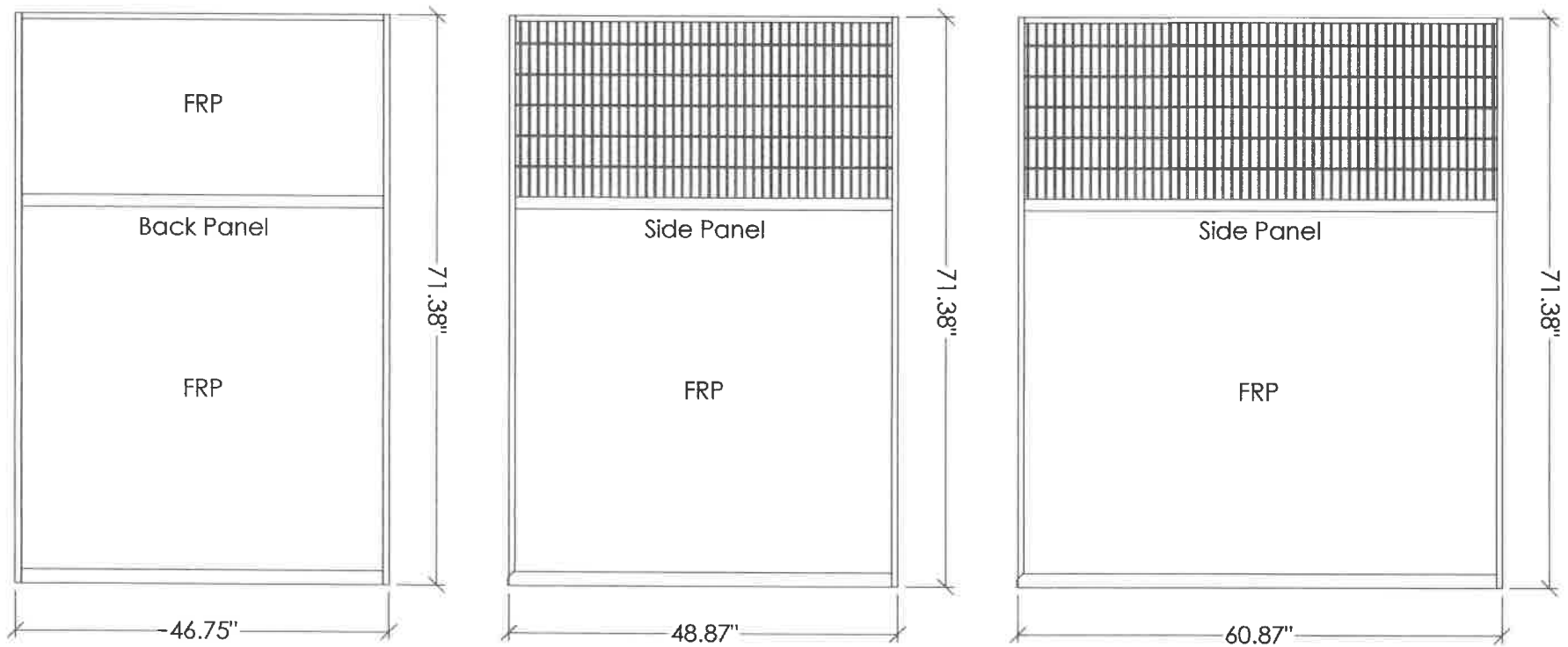
Kennel 3D View

(Signature)

(Date)



Classroom 6





Midmark Quotation

Customer Pricing

Quote Valid for 90 Days
Date Quoted: 8/13/2024

Project Information:

Project Name: City of Victorville

Project #: A242806 **Phase:** 01 **Rev:** 2

Agreement: Animal Health 2024 Pricing

Quote Breakdown (Reference Number: A242806 Phase: 01 Rev: 2)

Ext. Customer

Total Product Charges

\$42,877.30



Midmark Quotation

Customer Pricing

Quote Valid for 90 Days
Date Quoted: 8/13/2024

Project Information:

Project Name: City of Victorville

Project #: A242806 **Phase:** 01 **Rev:** 2

Agreement: Animal Health 2024 Pricing

Room Breakdown	Customer Each	Ext. Customer
T-KENNEL QUAD UNITS	\$3,877.22	\$42,877.30
Total Price:		Customer: \$42,877.30



Midmark Quotation

Customer Pricing

Quote Valid for 90 Days
Date Quoted: 8/13/2024

Project Information:

Project Name: City of Victorville

Project #: A242806 **Phase:** 01 **Rev:** 2

Agreement: Animal Health 2024 Pricing

Category Breakdown

Ext. Customer

Kennel Runs

\$42,877.30

Total Price:

Customer: \$42,877.30



Midmark Quotation

Customer Pricing

Quote Valid for 90 Days
Date Quoted: 8/13/2024

Project Information:

Project Name: City of Victorville

Project #: A242806 **Phase:** 01 **Rev:** 2

Agreement: Animal Health 2024 Pricing

Part Number	QTY	Description	Customer Each	Ext. Customer
T-KENNEL QUAD UNITS				
041.0104.03	12	36 Upper Drain Kit	\$0.00	\$0.00
723672.1A1.AA.11	12	T-Kennel, Gate,SS,36X72,Double Door,Wire,Left Side Right Hinge,Single Feed Slot In Panel	\$583.33	\$6,999.96
744772.N4A.1E.R.11.XXX	14	PNL SS DD 47X72 FISO NSLP, COLOR TBD	\$866.44	\$12,130.16
931.7200.01	2	T-Kennel, King Post,1X1X72Lg,Std,SS	\$69.22	\$138.44
961.0000.02	1	Drain Kit	\$0.00	\$0.00
961.0000.09	1	HARDWARE KIT-GENERIC (MEDIUM)	\$0.00	\$0.00
966.0048.01	2	LEG ATTACH,48.00 FLOOR,SGL,START,GLV	\$0.00	\$0.00
966.0048.03	2	SPACER ATTACH,48.00 FLOOR,SGL,END,GLV	\$0.00	\$0.00
990.3100	6	Bk Pnl,DD 36X72 W/TRANSFER (BOTTOM ONLY), PVC TBD	\$781.67	\$4,690.02
990.3100	12	Floor 36x48, w/drain, upper, PVC TBD	\$633.89	\$7,606.68
990.3100	12	36x48 raised floor w/drain for quad kennel,SS,PVC TBD	\$942.67	\$11,312.04
Total T-KENNEL QUAD UNITS:			\$42,877.30	
			Total Midmark: \$42,877.30	



Midmark Quotation

Terms & Conditions

Project Information:

Project Name: City of Victorville

Project #: A242806 **Phase:** 01 **Rev:** 2

Agreement: Animal Health 2024 Pricing

Midmark Rep Information:

Project Rep: CJ Nicolas

Email: cnicolas@midmark.com

Designer Information:

Designer: Summer Smith

Email: stsmith@midmark.com

Phone: 1-800-MIDMARK

Midmark Order Policy

- Signed drawings and verified field measurements (if applicable) are required before an order can be placed. For questions regarding these details, refer to your Midmark Representative.
- Approved payment terms are required before an order can be placed.
- Installation may be included in your quote. If installation is included, a Statement of Work will accompany the quote (exclusions apply). If installation is not included, please request a quote.
- A Midmark Representative may be able to provide you with an estimate on freight and taxes upon request.

Order Changes

- All changes should happen before the receipt of the order.
- Order changes made after receipt of an order may incur a change fee and a shipping date change. This fee will cover materials, labor, and handling costs.
- All changes must be submitted in writing. Upon review and approval of changes, the order will be moved to the next ship date.

Delayed/Rescheduled Ship Dates

- Requests to reschedule orders that have not been built will be move to the next available ship date.
- Request to reschedule or delay shipment of orders that have been built will incur storage and handling fees until shipped.

Order Cancellation

- Cancellation 48 hours from the time of order placement is subject to penalty. An assessment will be made at the time of cancellation to determine the amount of penalty, including material, labor, and handling costs.
- Cancellation must be received in writing. Non-standard color and custom configuration orders may not be canceled without penalty.

Return of Merchandise

- Made-to-order products (including but not limited to: Cabinetry, Containment, Workstations) or non-standard colors are non-returnable.

Shipping & Receiving Policy

- Orders shipped via common LTL or full truckload carrier.
- Please specify your preferred delivery date. The preferred delivery date is not guaranteed based on Midmark lead time and the carrier's availability.
- Please specify if the delivery site is NOT able to accept delivery on a full-size 53' truck and trailer, if there are steps at the delivery site, or if your location requires special delivery accommodations.
- Optional delivery services available for additional charges may include lift gate, customer-assisted inside delivery, white glove delivery, and guaranteed delivery. Contact your Midmark Representative for a quote on optional delivery services.
- Delivery should be arranged with a project coordinator from each Midmark location.
- Customer pick-up orders are subject to a handling fee. The customer is responsible for the product upon pick-up.
- Report any damaged goods or short shipments to the freight carrier and contact Midmark Corporation immediately. If concealed damage is found, it must be reported within 5 days of delivery or the time allowed based on the National Motor Freight Classification's standard, whichever is less.

Lead Times

- Contact your Midmark Sales Representative as current lead times are dynamic due to the global supply chain disruption.

No Damages For Delay

- Although Midmark will attempt to meet shipment and delivery schedules, Midmark will not be liable to the Purchaser for any damages resulting from late shipment or delivery, including but not limited to direct, indirect, economic, incidental, or consequential damage, including without limitation lost profits or income, loss of use, downtime, cover, and employee or independent contractor wages, payments, and benefits.

**QUAD KENNELS
ON RAISED FLOOR**

