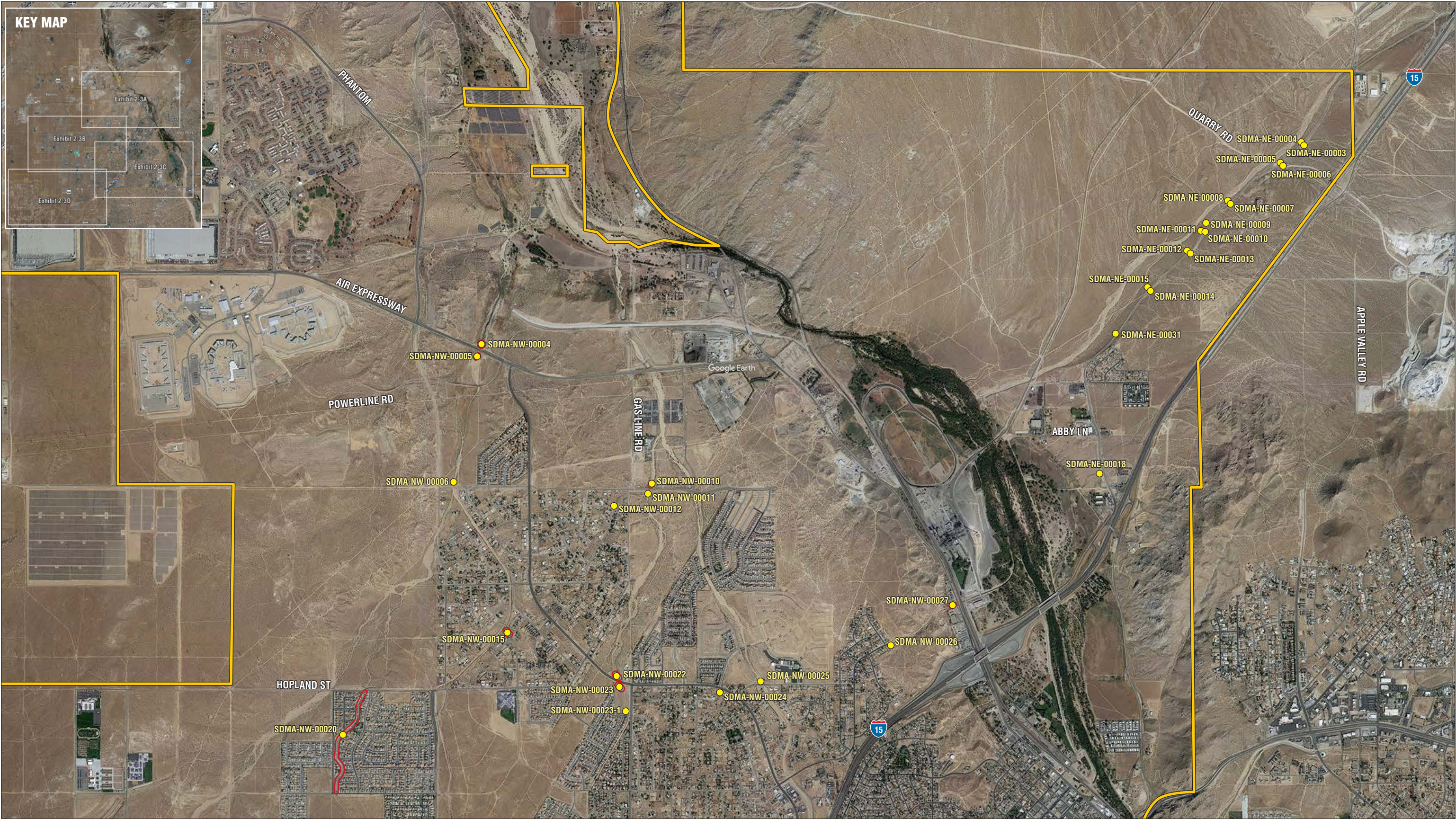


# **ATTACHMENT A**

Map



Source: Google Earth Pro, May 2021

NOT TO SCALE

Michael Baker  
INTERNATIONAL

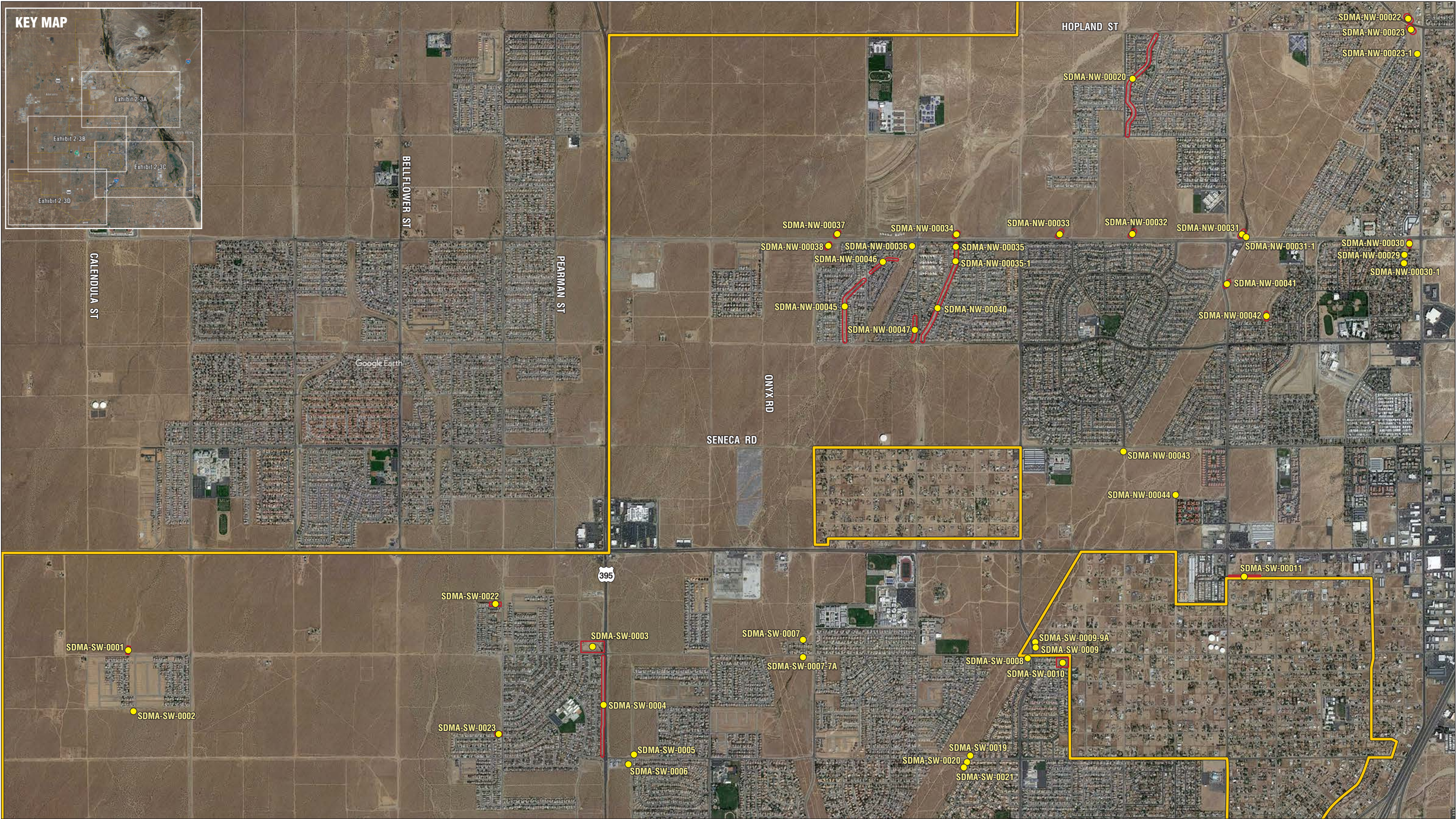


05/2021 JN 174323

- City Boundary
- Project Facilities
- Facility Identifier

CITY-WIDE ENVIRONMENTAL MAINTENANCE PERMITS FOR EPHEMERAL WASHES PROJECT  
INITIAL STUDY/MITIGATED NEGATIVE DECLARATION

Proposed Project Site



Source: Google Earth Pro, May 2021

NOT TO SCALE

Michael Baker  
INTERNATIONAL



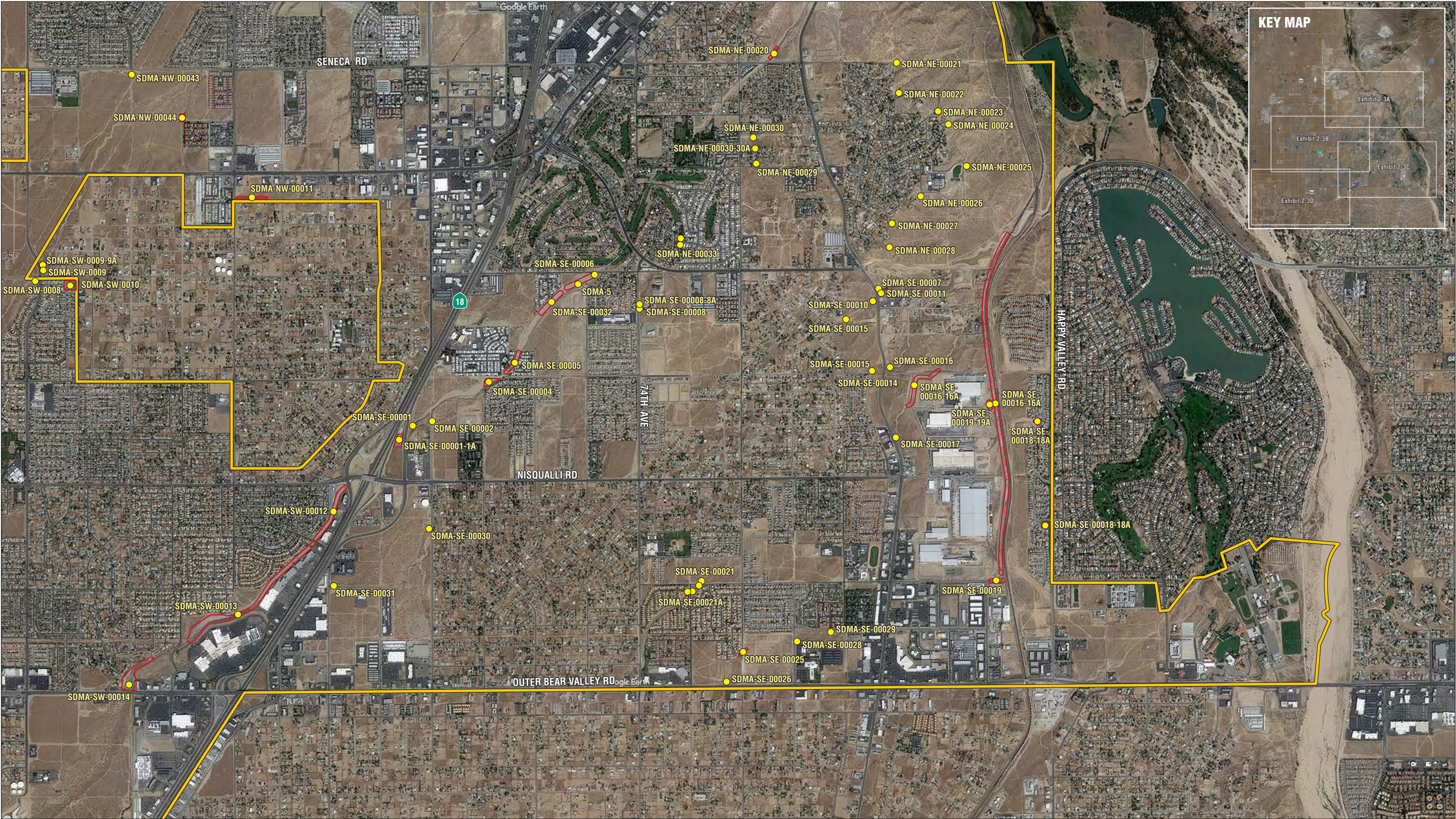
05/2021 JN 174323

- City Boundary
- Project Facilities
- Facility Identifier

CITY-WIDE ENVIRONMENTAL MAINTENANCE PERMITS FOR EPHEMERAL WASHES PROJECT  
INITIAL STUDY/MITIGATED NEGATIVE DECLARATION

**Proposed Project Site**

**Exhibit 2-3B**



Source: Google Earth Pro, May 2021

NOT TO SCALE

Michael Baker  
INTERNATIONAL



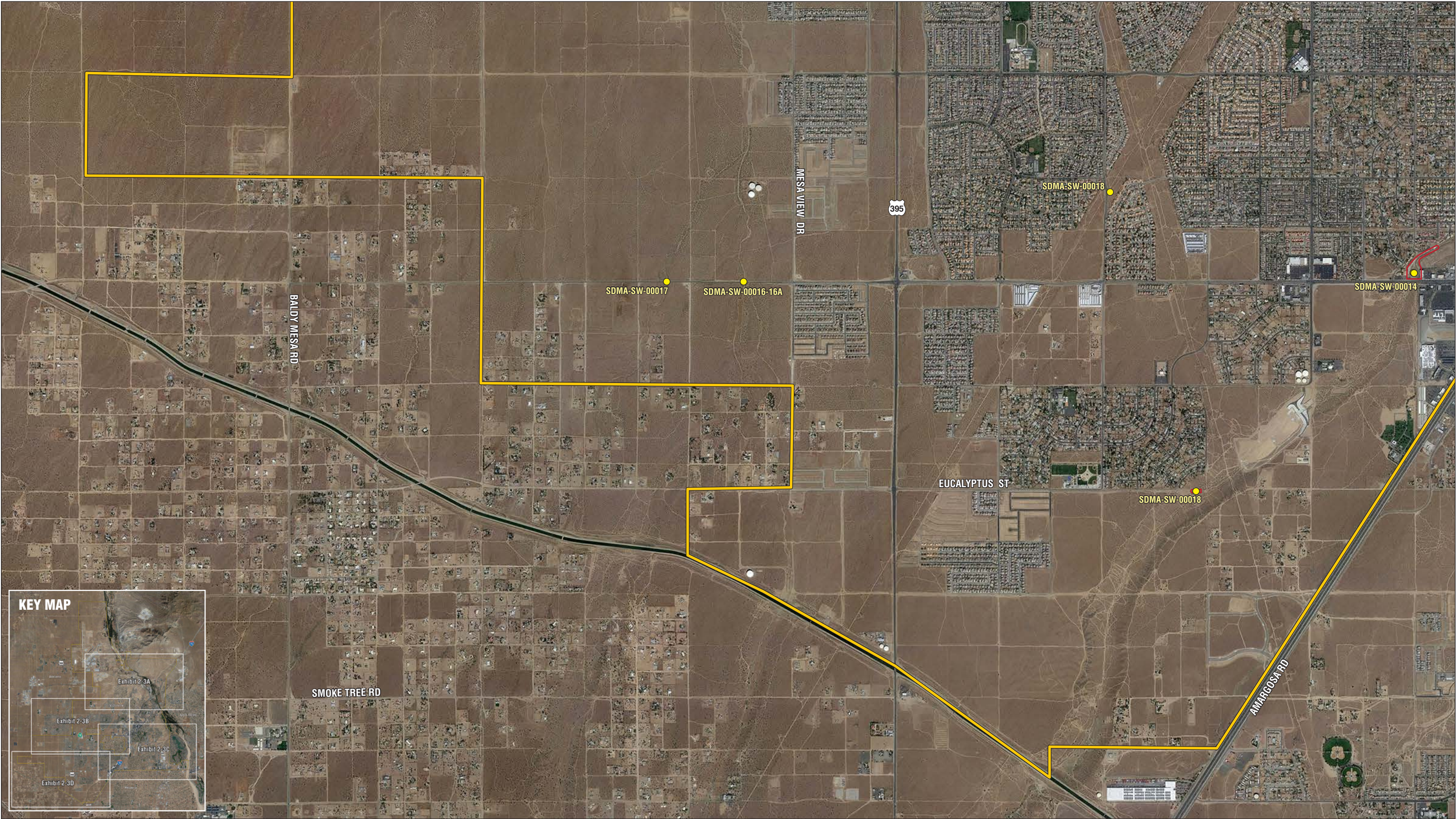
05/2021 JN 174323

- City Boundary
- Project Facilities
- Facility Identifier

CITY-WIDE ENVIRONMENTAL MAINTENANCE PERMITS FOR EPHEMERAL WASHES PROJECT  
INITIAL STUDY/MITIGATED NEGATIVE DECLARATION

# Proposed Project Site

Exhibit 2-3C



Source: Google Earth Pro, May 2021

NOT TO SCALE

Michael Baker  
INTERNATIONAL



05/2021 JN 174323

- City Boundary
- Project Facilities
- Facility Identifier

CITY-WIDE ENVIRONMENTAL MAINTENANCE PERMITS FOR EPHEMERAL WASHES PROJECT  
INITIAL STUDY/MITIGATED NEGATIVE DECLARATION

Proposed Project Site