

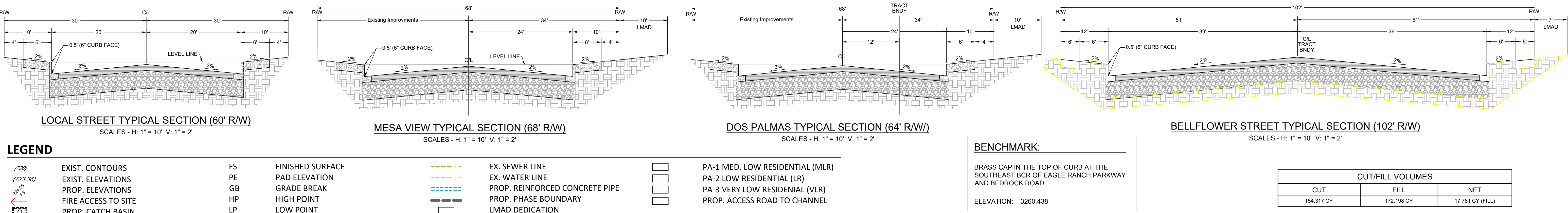
# ATTACHMENT B

Tentative Tract Map No. 20262

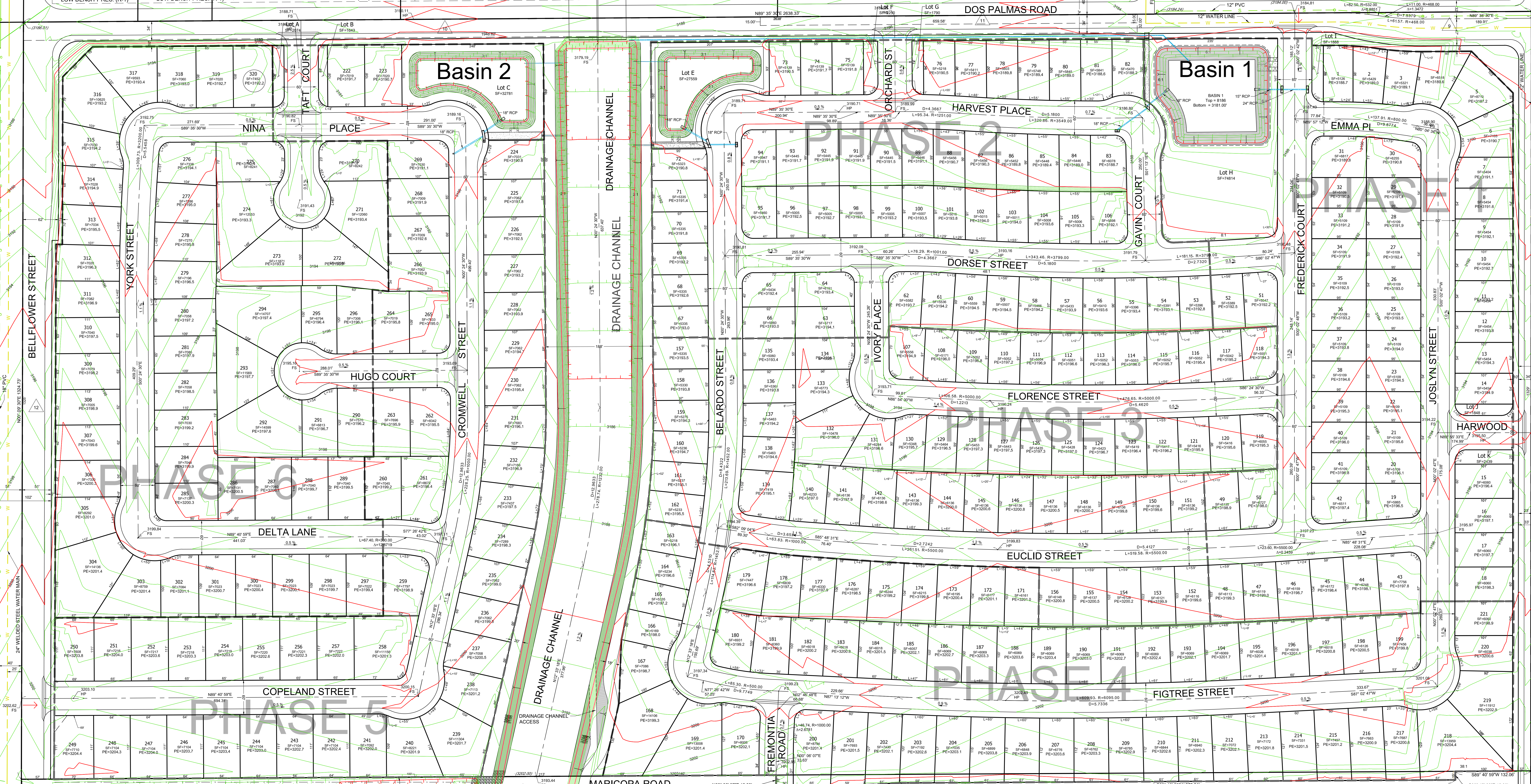


# TENTATIVE TRACT MAP NO. 20262

THE NORTH 1/2 AND A PORTION OF THE S 1/2 OF THE NW 1/4 OF SECTION 28, T5N, R5W, SBM, IN THE CITY OF VICTORVILLE, COUNTY OF SAN BERNARDINO, STATE OF CALIFORNIA, ACCORDING TO THE OFFICIAL PLAT OF SAID LAND APPROVED BY THE SURVEYOR GENERAL



LEGEND		BENCHMARK:		CUT/FILL VOLUMES	
EXIST. CONTOURS	FS FINISHED SURFACE	PA-1 MED. LOW RESIDENTIAL (MLR)	BRASS CAP IN THE TOP OF CURB AT THE	CUT	FILL
EXIST. ELEVATIONS	PE PAD ELEVATION	PA-2 LOW RESIDENTIAL (LR)	SOUTHEAST CORNER OF EAGLE RANCH PARKWAY	154.317 CY	172.198 CY
PROP. ELEVATIONS	GB GRADE BREAK	PA-3 VERY LOW RESIDENTIAL (VLR)	AND BEDROCK ROAD.		NET
FIRE ACCESS TO SITE	HP HIGH POINT	PROP. ACCESS ROAD TO CHANNEL	ELEVATION: 3260.438		17.781 CY (FILL)
PROP. CATCH BASIN	LP LOW POINT				



APN: 3096-321-07  
LOW DENSITY RESIDENTIAL (R-1)

APPLICANT/OWNER:  
R.T. PROPERTIES, INC.  
212 SOUTH PALM AVENUE, SUITE 200  
ALHAMBRA, CA 91801  
PHONE: (626) 282-3100

ENGINEER:  
LUDWIG ENGINEERING ASSOCIATES, INC.  
109 E. 3RD ST  
SAN BERNARDINO, CA 92410  
PHONE: (909) 884-8217

ASSESSOR'S PARCEL NUMBER:  
3096-321-07-0000

LEGAL DESCRIPTION:  
TRACT MAP NO. 16397, BEING A SUBDIVISION OF THE FOLLOWING:  
PARCEL "A" OF LOT LINE ADJUSTMENT NO. ADM07-00073, RECORDED SEPTEMBER 30, 2009 AS INSTRUMENT NO. 2009-0430324 OF OFFICIAL RECORDS, DESCRIBED AS FOLLOWS: THE NORTH ONE-HALF AND A PORTION OF THE SOUTH ONE-HALF OF THE NORTHWEST ONE-QUARTER OF SECTION 28, TOWNSHIP 5 NORTH, RANGE 5 WEST, SAN BERNARDINO BASE AND MERIDIAN, IN THE CITY OF VICTORVILLE, COUNTY OF SAN BERNARDINO, STATE OF CALIFORNIA, MORE PARTICULARLY DESCRIBED AS FOLLOWS:  
BEGINNING AT THE NORTH QUARTER CORNER OF SAID SECTION 28; THENCE SOUTH 00° 02' 06" WEST, 1,326.90 FEET TO A POINT ON THE SOUTHERLY LINE OF SAID NORTH ONE-HALF OF THE NORTHWEST ONE-QUARTER OF SECTION 28; THENCE SOUTH 89° 40' 28" WEST ALONG SAID SOUTHERLY LINE, 135.82 FEET; THENCE SOUTH 00° 17' 50" EAST TO A POINT ON A LINE PARALLEL AND DISTANT 15.00 FEET SOUTHERLY FROM

APN: 3096-321-08  
LOW DENSITY RESIDENTIAL (R-1)

APN: 3096-321-15  
LOW DENSITY RESIDENTIAL (R-1)

APN: 3096-321-16  
LOW DENSITY RESIDENTIAL (R-1)

APN: 3096-321-17  
LOW DENSITY RESIDENTIAL (R-1)

APN: 3096-321-18  
LOW DENSITY RESIDENTIAL (R-1)

APN: 3096-321-19  
LOW DENSITY RESIDENTIAL (R-1)

APN: 3096-321-20  
LOW DENSITY RESIDENTIAL (R-1)

APN: 3096-321-21  
LOW DENSITY RESIDENTIAL (R-1)

APN: 3096-321-22  
LOW DENSITY RESIDENTIAL (R-1)

APN: 3096-321-23  
LOW DENSITY RESIDENTIAL (R-1)

APN: 3096-321-24  
LOW DENSITY RESIDENTIAL (R-1)

APN: 3096-321-25  
LOW DENSITY RESIDENTIAL (R-1)

APN: 3096-321-26  
LOW DENSITY RESIDENTIAL (R-1)

APN: 3096-321-27  
LOW DENSITY RESIDENTIAL (R-1)

APN: 3096-321-28  
LOW DENSITY RESIDENTIAL (R-1)

APN: 3096-321-29  
LOW DENSITY RESIDENTIAL (R-1)

APN: 3096-321-30  
LOW DENSITY RESIDENTIAL (R-1)

APN: 3096-321-31  
LOW DENSITY RESIDENTIAL (R-1)

APN: 3096-321-32  
LOW DENSITY RESIDENTIAL (R-1)

APN: 3096-321-33  
LOW DENSITY RESIDENTIAL (R-1)

APN: 3096-321-34  
LOW DENSITY RESIDENTIAL (R-1)

APN: 3096-321-35  
LOW DENSITY RESIDENTIAL (R-1)

APN: 3096-321-36  
LOW DENSITY RESIDENTIAL (R-1)

APN: 3096-321-37  
LOW DENSITY RESIDENTIAL (R-1)

APN: 3096-321-38  
LOW DENSITY RESIDENTIAL (R-1)

APN: 3096-321-39  
LOW DENSITY RESIDENTIAL (R-1)

APN: 3096-321-40  
LOW DENSITY RESIDENTIAL (R-1)

APN: 3096-321-41  
LOW DENSITY RESIDENTIAL (R-1)

APN: 3096-321-42  
LOW DENSITY RESIDENTIAL (R-1)

APN: 3096-321-43  
LOW DENSITY RESIDENTIAL (R-1)

APN: 3096-321-44  
LOW DENSITY RESIDENTIAL (R-1)

APN: 3096-321-45  
LOW DENSITY RESIDENTIAL (R-1)

APN: 3096-321-46  
LOW DENSITY RESIDENTIAL (R-1)

APN: 3096-321-47  
LOW DENSITY RESIDENTIAL (R-1)

APN: 3096-321-48  
LOW DENSITY RESIDENTIAL (R-1)

APN: 3096-321-49  
LOW DENSITY RESIDENTIAL (R-1)

APN: 3096-321-50  
LOW DENSITY RESIDENTIAL (R-1)

APN: 3096-321-51  
LOW DENSITY RESIDENTIAL (R-1)

APN: 3096-321-52  
LOW DENSITY RESIDENTIAL (R-1)

APN: 3096-321-53  
LOW DENSITY RESIDENTIAL (R-1)

APN: 3096-321-54  
LOW DENSITY RESIDENTIAL (R-1)

APN: 3096-321-55  
LOW DENSITY RESIDENTIAL (R-1)

APN: 3096-321-56  
LOW DENSITY RESIDENTIAL (R-1)

APN: 3096-321-57  
LOW DENSITY RESIDENTIAL (R-1)

APN: 3096-321-58  
LOW DENSITY RESIDENTIAL (R-1)

APN: 3096-321-59  
LOW DENSITY RESIDENTIAL (R-1)

APN: 3096-321-60  
LOW DENSITY RESIDENTIAL (R-1)

APN: 3096-321-61  
LOW DENSITY RESIDENTIAL (R-1)

APN: 3096-321-62  
LOW DENSITY RESIDENTIAL (R-1)

APN: 3096-321-63  
LOW DENSITY RESIDENTIAL (R-1)

APN: 3096-321-64  
LOW DENSITY RESIDENTIAL (R-1)

APN: 3096-321-65  
LOW DENSITY RESIDENTIAL (R-1)

APN: 3096-321-66  
LOW DENSITY RESIDENTIAL (R-1)

APN: 3096-321-67  
LOW DENSITY RESIDENTIAL (R-1)

APN: 3096-321-68  
LOW DENSITY RESIDENTIAL (R-1)

APN: 3096-321-69  
LOW DENSITY RESIDENTIAL (R-1)

APN: 3096-321-70  
LOW DENSITY RESIDENTIAL (R-1)

APN: 3096-321-71  
LOW DENSITY RESIDENTIAL (R-1)

APN: 3096-321-72  
LOW DENSITY RESIDENTIAL (R-1)

APN: 3096-321-73  
LOW DENSITY RESIDENTIAL (R-1)

APN: 3096-321-74  
LOW DENSITY RESIDENTIAL (R-1)

APN: 3096-321-75  
LOW DENSITY RESIDENTIAL (R-1)

APN: 3096-321-76  
LOW DENSITY RESIDENTIAL (R-1)

APN: 3096-321-77  
LOW DENSITY RESIDENTIAL (R-1)

APN: 3096-321-78  
LOW DENSITY RESIDENTIAL (R-1)

APN: 3096-321-79  
LOW DENSITY RESIDENTIAL (R-1)

APN: 3096-321-80  
LOW DENSITY RESIDENTIAL (R-1)

APN: 3096-321-81  
LOW DENSITY RESIDENTIAL (R-1)

APN: 3096-321-82  
LOW DENSITY RESIDENTIAL (R-1)

APN: 3096-321-83  
LOW DENSITY RESIDENTIAL (R-1)

APN: 3096-321-84  
LOW DENSITY RESIDENTIAL (R-1)

APN: 3096-321-85  
LOW DENSITY RESIDENTIAL (R-1)

APN: 3096-321-86  
LOW DENSITY RESIDENTIAL (R-1)

APN: 3096-321-87  
LOW DENSITY RESIDENTIAL (R-1)

APN: 3096-321-88  
LOW DENSITY RESIDENTIAL (R-1)

APN: 3096-321-89  
LOW DENSITY RESIDENTIAL (R-1)

APN: 3096-321-90  
LOW DENSITY RESIDENTIAL (R-1)

APN: 3096-321-91  
LOW DENSITY RESIDENTIAL (R-1)

APN: 3096-321-92  
LOW DENSITY RESIDENTIAL (R-1)

APN: 3096-321-93  
LOW DENSITY RESIDENTIAL (R-1)

APN: 3096-321-94  
LOW DENSITY RESIDENTIAL (R-1)

APN: 3096-321-95  
LOW DENSITY RESIDENTIAL (R-1)

APN: 3096-321-96  
LOW DENSITY RESIDENTIAL (R-1)

APN: 3096-321-97  
LOW DENSITY RESIDENTIAL (R-1)

APN: 3096-321-98  
LOW DENSITY RESIDENTIAL (R-1)

APN: 3096-321-99  
LOW DENSITY RESIDENTIAL (R-1)

APN: 3096-321-100  
LOW DENSITY RESIDENTIAL (R-1)

APN: 3096-321-101  
LOW DENSITY RESIDENTIAL (R-1)

APN: 3096-321-102  
LOW DENSITY RESIDENTIAL (R-1)

APN: 3096-321-103  
LOW DENSITY RESIDENTIAL (R-1)

APN: 3096-321-104  
LOW DENSITY RESIDENTIAL (R-1)

APN: 3096-321-105  
LOW DENSITY RESIDENTIAL (R-1)

APN: 3096-321-106  
LOW DENSITY RESIDENTIAL (R-1)

APN: 3096-321-107  
LOW DENSITY RESIDENTIAL (R-1)

APN: 3096-321-108  
LOW DENSITY RESIDENTIAL (R-1)

APN: 3096-321-109  
LOW DENSITY RESIDENTIAL (R-1)

APN: 3096-321-110  
LOW DENSITY RESIDENTIAL (R-1)

APN: 3096-321-111  
LOW DENSITY RESIDENTIAL (R-1)

APN: 3096-321-112  
LOW DENSITY RESIDENTIAL (R-1)

APN: 3096-321-113  
LOW DENSITY RESIDENTIAL (R-1)

APN: 3096-321-114  
LOW DENSITY RESIDENTIAL (R-1)

APN: 3096-321-115  
LOW DENSITY RESIDENTIAL (R-1)

APN: 3096-321-116  
LOW DENSITY RESIDENTIAL (R-1)

APN: 3096-321-117  
LOW DENSITY RESIDENTIAL (R-1)

APN: 3096-321-118  
LOW DENSITY RESIDENTIAL (R-1)

APN: 3096-321-119  
LOW DENSITY RESIDENTIAL (R-1)

APN: 3096-321-120  
LOW DENSITY RESIDENTIAL (R-1)

APN: 3096-321-121  
LOW DENSITY RESIDENTIAL (R-1)

APN: 3096-321-122  
LOW DENSITY RESIDENTIAL (R-1)

APN: 3096-321-123  
LOW DENSITY RESIDENTIAL (R-1)

APN: 3096-321-124  
LOW DENSITY RESIDENTIAL (R-1)

APN: 3096-321-125  
LOW DENSITY RESIDENTIAL (R-1)

APN: 3096-321-126  
LOW DENSITY RESIDENTIAL (R-1)

APN: 3096-321-127  
LOW DENSITY RESIDENTIAL (R-1)

APN: 3096-321-128  
LOW DENSITY RESIDENTIAL (R-1)

APN: 3096-321-129  
LOW DENSITY RESIDENTIAL (R-1)

APN: 3096-321-130  
LOW DENSITY RESIDENTIAL (R-1)

APN: 3096-321-131  
LOW DENSITY RESIDENTIAL (R-1)

APN: 3096-321-132  
LOW DENSITY RESIDENTIAL (R-1)

APN: 3096-321-133  
LOW DENSITY RESIDENTIAL (R-1)

APN: 3096-321-134  
LOW DENSITY RESIDENTIAL (R-1)

APN: 3096-321-135  
LOW DENSITY RESIDENTIAL (R-1)

APN: 3096-321-136  
LOW DENSITY RESIDENTIAL (R-1)

APN: 3096-321-137  
LOW DENSITY RESIDENTIAL (R-1)

APN: 3096-321-138  
LOW DENSITY RESIDENTIAL (R-1)

APN: 3096-321-139  
LOW DENSITY RESIDENTIAL (R-1)

APN: 3096-321-140  
LOW DENSITY RESIDENTIAL (R-1)

APN: 3096-321-141  
LOW DENSITY RESIDENTIAL (R-1)

APN: 3096-321-142  
LOW DENSITY RESIDENTIAL (R-1)

APN: 3096-321-143  
LOW DENSITY RESIDENTIAL (R-1)

APN: 3096-321-144  
LOW DENSITY RESIDENTIAL (R-1)

APN: 3096-321-145  
LOW DENSITY RESIDENTIAL (R-1)

APN: 3096-321-146  
LOW DENSITY RESIDENTIAL (R-1)

APN: 3096-321-147  
LOW DENSITY RESIDENTIAL (R-1)

APN: 3096-321-148  
LOW DENSITY RESIDENTIAL (R-1)

APN: 3096-321-149  
LOW DENSITY RESIDENTIAL (R-1)

APN: 3096-321-150  
LOW DENSITY RESIDENTIAL (R-1)

APN: 3096-321-151  
LOW DENSITY RESIDENTIAL (R-1)

APN: 3096-321-152  
LOW DENSITY RESIDENTIAL (R-1)

APN: 3096-321-153  
LOW DENSITY RESIDENTIAL (R-1)

APN: 3096-321-154  
LOW DENSITY RESIDENTIAL (R-1)

APN: 3096-321-155  
LOW DENSITY RESIDENTIAL (R-1)

APN: 3096-321-156  
LOW DENSITY RESIDENTIAL (R-1)

APN: 3096-321-157  
LOW DENSITY RESIDENTIAL (R-1)

APN: 3096-321-158  
LOW DENSITY RESIDENTIAL (R-1)

APN: 3096-321-159  
LOW DENSITY RESIDENTIAL (R-1)

APN: 3096-321-160  
LOW DENSITY RESIDENTIAL (R-1)

APN: 3096-321-161  
LOW DENSITY RESIDENTIAL (R-1)

APN: 3096-321-162  
LOW DENSITY RESIDENTIAL (R-1)

APN: 3096-321-163  
LOW DENSITY RESIDENTIAL (R-1)

APN: 3096-321-164  
LOW DENSITY RESIDENTIAL (R-1)

APN: 3096-321-165  
LOW DENSITY RESIDENTIAL (R-1)

APN: 3096-321-166  
LOW DENSITY RESIDENTIAL (R-1)

APN: 3096-321-167  
LOW DENSITY RESIDENTIAL (R-1)

APN: 3096-321-168  
LOW DENSITY RESIDENTIAL (R-1)

APN: 3096-321-169  
LOW DENSITY RESIDENTIAL (R-1)

APN: 3096-321-170  
LOW DENSITY RESIDENTIAL (R-1)

APN: 3096-321-171  
LOW DENSITY RESIDENTIAL (R-1)

APN: 3096-321-172  
LOW DENSITY RESIDENTIAL (R-1)

APN: 3096-321-173  
LOW DENSITY RESIDENTIAL (R-1)

APN: 3096-321-174  
LOW DENSITY RESIDENTIAL (R-1)

APN: 3096-321-175  
LOW DENSITY RESIDENTIAL (R-1)

APN: 3096-321-176  
LOW DENSITY RESIDENTIAL (R-1)

APN: 3096-321-177  
LOW DENSITY RESIDENTIAL (R-1)

APN: 3096-321-178  
LOW DENSITY RESIDENTIAL (R-1)

APN: 3096-321-179  
LOW DENSITY RESIDENTIAL (R-1)

APN: 3096-321-180  
LOW DENSITY RESIDENTIAL (R-1)

APN: 3096-321-181  
LOW DENSITY RESIDENTIAL (R-1)

APN: 3096-321-182  
LOW DENSITY RESIDENTIAL (R-1)

APN: 3096-321-183  
LOW DENSITY RESIDENTIAL (R-1)

APN: 3096-321-184  
LOW DENSITY RESIDENTIAL (R-1)

APN: 3096-321-185  
LOW DENSITY RESIDENTIAL (R-1)

APN: 3096-321-186  
LOW DENSITY RESIDENTIAL (R-1)

APN: 3096-321-187  
LOW DENSITY RESIDENTIAL (R-1)

APN: 3096-321-188  
LOW DENSITY RESIDENTIAL (R-1)

APN: 3096-321-189