

Attachment C



Parks and Recreation Master Plan
December 2020

APPENDIX F: INFILL ANALYSIS/MAPS

Table 23: Victorville Parks Amenity Infill Table

Victorville Parks Master Plan
Amenity Infill Matrix

		Avalon Park	Brentwood Park	Center Street Park	Doris Davies Park			Eagle Ranch Park	Eva Dell Park	Grady Trammel Park	Green Tree Golf Course	Hollyvale Park	Hook Park	Las Haciendas Park	Liberty Park						
		20,584	7,720	73,795	5,446	1,806	62,180	17,995	11,187	32,319	120,108	43,802	1,777		1,547	5,754	19,829	6,888	6,427	11,114	5,355
Traditional Recreation Facilities for Infill	Typical SF	1	2	1	1	2	1	2	3	1	1	2	1		1	2	1	1	2	1	2
Ball Field	20,000-100,000	•		•			•			•	•	•									
<i>Sml Softball Field (170'-200' Fence)</i>	20,000-27,750			•			•				•										
<i>Lrg Softball Field/Sml Baseball Field (200'-230' Fence)</i>	25,000-35,000			•			•				•										
<i>Med Baseball Field (300'-350' Fence)</i>	39,500-61,500			•			•														
<i>Lrg Baseball Field (350'-400' Fence)</i>	83,000-105,500																				
Bocce Ball/Shuffleboard	5,000-10,000	•	•	•	•		•	•	•	•	•	•				•	•	•	•	•	•
Community Center/Gym	25,000-70,000			•			•			•	•	•									
Court/Rink Sports	2,000-5,000	•	•	•	•		•	•	•	•	•	•				•	•	•	•	•	•
Dog Park	10,000-75,000	•		•			•	•	•	•	•	•					•			•	
Outdoor Gym and Exterior Exercise Areas	5,000-20,000	•	•	•	•		•	•	•	•	•	•				•	•	•	•	•	•
Pickleball	2,500-3,500	•	•	•	•		•	•	•	•	•	•				•	•	•	•	•	•
Picnic Areas	500-1,500	•	•	•	•	•	•	•	•	•	•	•	•		•	•	•	•	•	•	•
Playgrounds	4,000-6,000	•	•	•	•		•	•	•	•	•	•				•	•	•	•	•	•
Soccer Field	4,000-75,000	•	•	•	•		•	•	•	•	•	•				•	•	•	•	•	•
<i>Sml Soccer Field (6U & 8U)</i>	4,050-11,250	•	•	•	•		•	•	•	•	•	•				•	•	•	•	•	•
<i>Med Soccer Field (10U & 12U)</i>	25,200-36,000			•			•			•	•										
<i>Lrg Soccer Field (14U & 16U+)</i>	54,000-86,400+			•			•														
Tennis	7,200-28,000	•	•	•			•	•	•	•	•	•					•			•	
Volleyball	4,000-16,000	•	•	•	•		•	•	•	•	•	•					•		•	•	•
Non-Traditional Recreation Facilities for Infill for Infill																					
Adventure Playgrounds	4,000-6,000	•	•	•	•		•	•	•	•	•	•				•	•	•	•	•	•
BMX Course	40,000-60,000			•			•				•	•									
Community Garden	2,000-40,000	•	•	•	•		•	•	•	•	•	•				•	•	•	•	•	•
Disk Golf Course	50,000-200,000			•			•				•										
Pump Track/Bike Skills Course	10,000-20,000	•		•			•	•	•	•	•	•					•			•	
Rope/Adventure/Skills Course	5,000-50,000	•	•	•	•		•	•	•	•	•	•				•	•	•	•	•	•
Skate Spot	4,000-10,000	•	•	•	•		•	•	•	•	•	•				•	•	•	•	•	•



Victorville Parks Master Plan
Amenity Infill Matrix

		Mesa Linda Park				Mojave Riverwalk	Mojave Vista Park	Old Victor Park	Rockview Nature Park	Schmidt Park			Sunset Ridge Park	Village Park			Westwind Sports Center				
		984	851	501	286		2,398	2,374	13,971	4,095	5,505	51,186	49,669	66,810	9,775	15,638	8,670	6,555	4,512	36,752	39,889
Traditional Recreation Facilities for Infill	Typical SF	1	2	3	4		1	1	2	1	2	1	2	3	1	2	1	2	3	1	2
Ball Field	20,000-100,000											•	•	•						•	•
<i>Sml Softball Field (170'-200' Fence)</i>	20,000-27,750																			•	•
<i>Lrg Softball Field/Sml Baseball Field (200'-230' Fence)</i>	25,000-35,000																				
<i>Med Baseball Field (300'-350' Fence)</i>	39,500-61,500																				
<i>Lrg Baseball Field (350'-400' Fence)</i>	83,000-105,500																				
Bocce Ball/Shuffleboard	5,000-10,000								•		•	•	•	•	•	•	•	•		•	•
Community Center/Gym	25,000-70,000											•	•	•						•	•
Court/Rink Sports	2,000-5,000						•	•	•	•	•	•	•	•	•	•	•	•	•	•	•
Dog Park	10,000-75,000								•			•	•	•		•				•	•
Outdoor Gym and Exterior Exercise Areas	5,000-20,000								•		•	•	•	•	•	•	•	•		•	•
Pickleball	2,500-3,500								•	•	•	•	•	•	•	•	•	•	•	•	•
Picnic Areas	500-1,500	•	•	•	•		•	•	•	•	•	•	•	•	•	•	•	•	•	•	•
Playgrounds	4,000-6,000								•	•	•	•	•	•	•	•	•	•	•	•	•
Soccer Field	4,000-75,000								•	•	•	•	•	•	•	•	•	•	•	•	•
<i>Sml Soccer Field (6U & 8U)</i>	4,050-11,250								•	•	•	•	•	•	•	•	•	•	•	•	•
<i>Med Soccer Field (10U & 12U)</i>	25,200-36,000											•	•	•							
<i>Lrg Soccer Field (14U & 16U+)</i>	54,000-86,400+													•							
Tennis	7,200-28,000								•			•	•	•	•	•	•			•	•
Volleyball	4,000-16,000								•	•	•	•	•	•	•	•	•	•	•	•	•
Non-Traditional Recreation Facilities for Infill for Infill																					
Adventure Playgrounds	4,000-6,000								•	•	•	•	•	•	•	•	•	•	•	•	•
BMX Course	40,000-60,000											•	•	•							
Community Garden	2,000-40,000						•	•	•	•	•	•	•	•	•	•	•	•	•	•	•
Disk Golf Course	50,000-200,000											•		•							
Pump Track/Bike Skills Course	10,000-20,000								•			•	•	•		•				•	•
Rope/Adventure/Skills Course	5,000-50,000								•		•	•	•	•	•	•	•	•		•	•
Skate Spot	4,000-10,000								•	•	•	•	•	•	•	•	•	•	•	•	•



Figure 72: Eagle Ranch Park

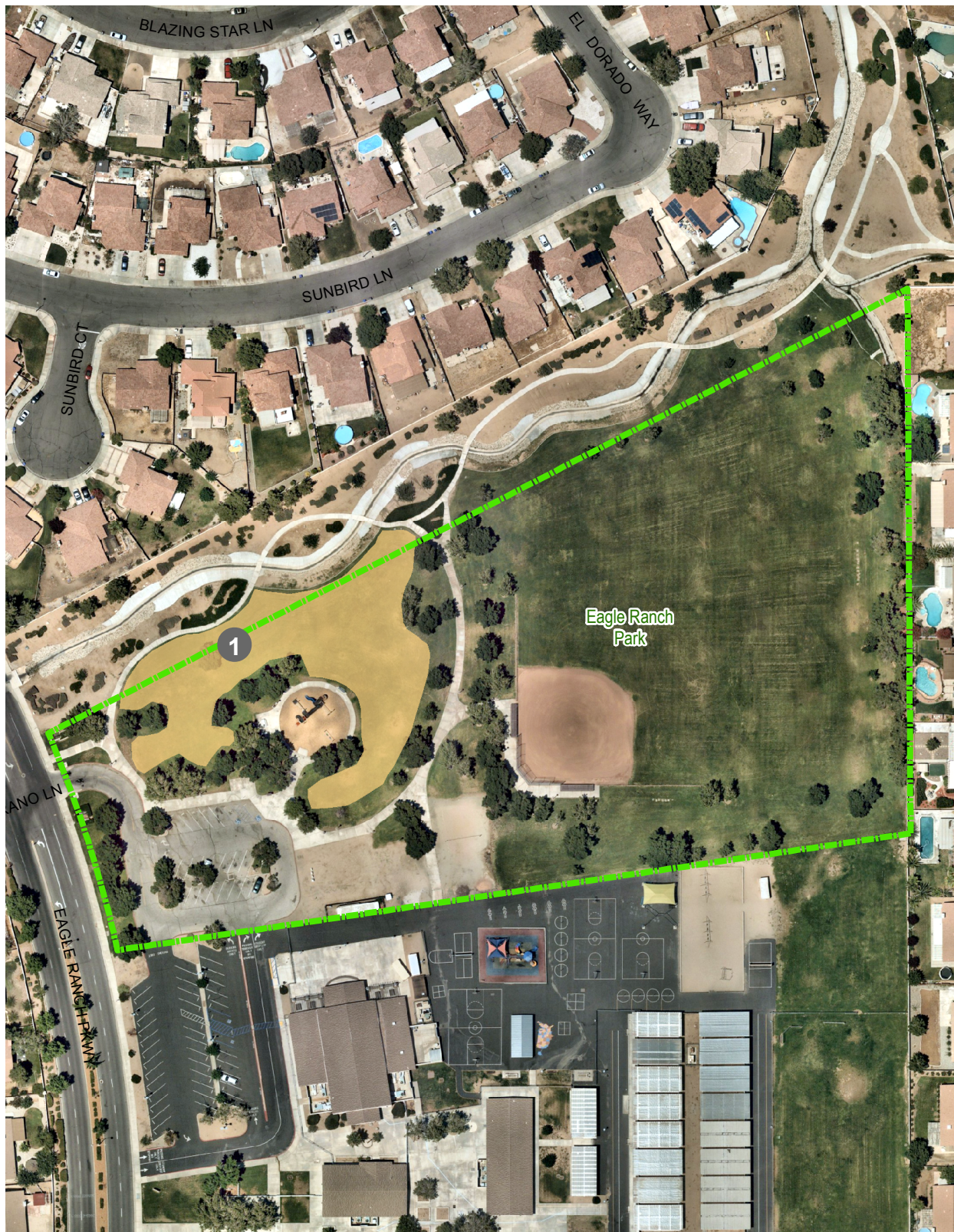


Figure 75: Hollyvale Park

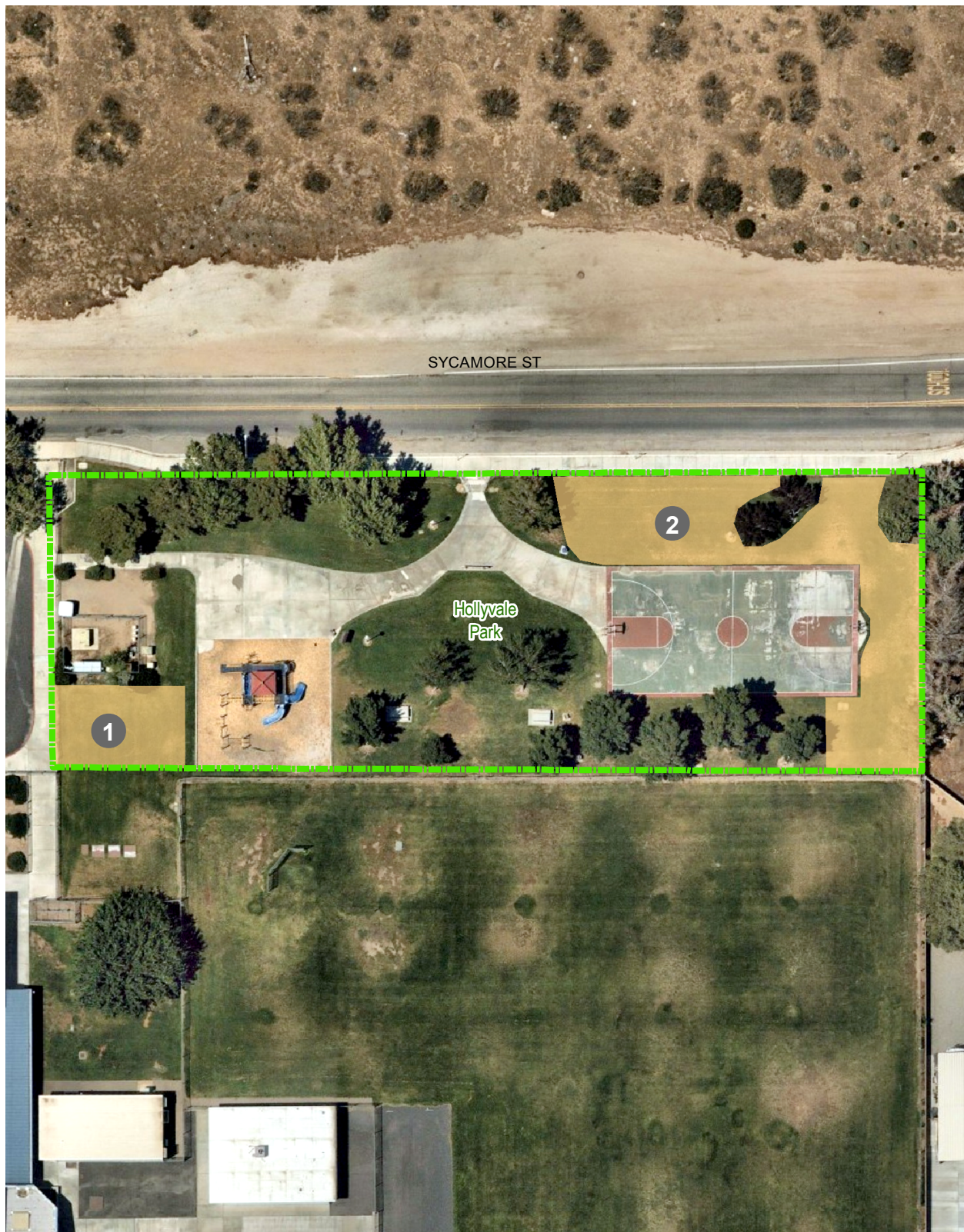


Figure 78: Liberty Park

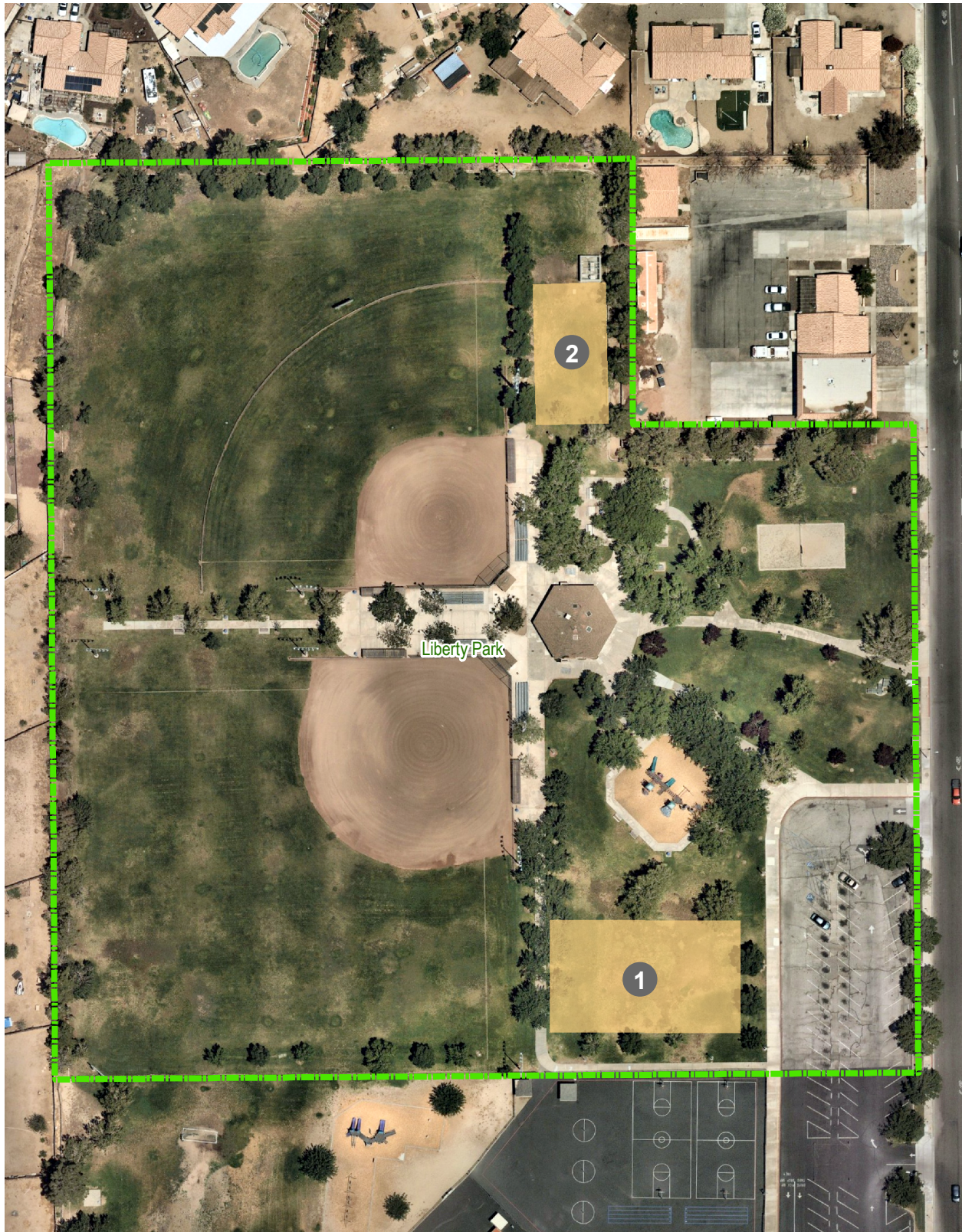


Figure 79: Mojave Vista Park

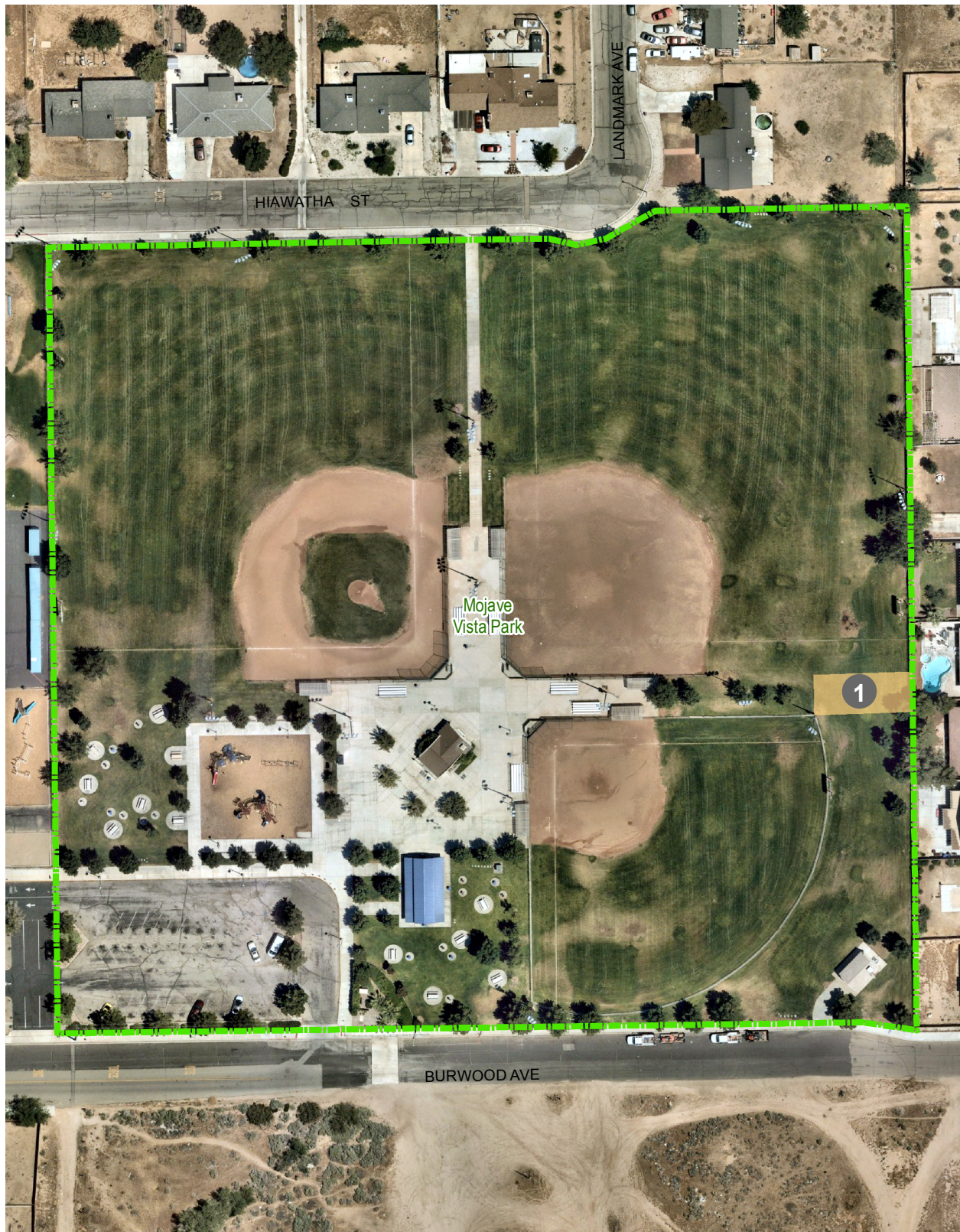


Figure 82: Sunset Ridge Park

